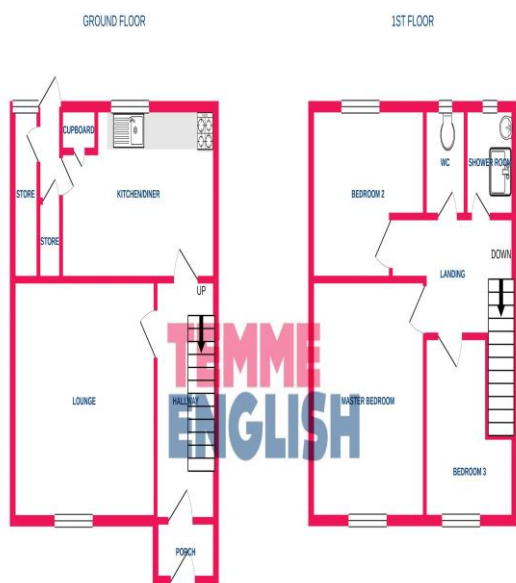




Temme English are excited to present this Spacious THREE bedroom end terrace house in a popular location. The property boasts off street parking via a paved rear driveway, side access, good size lounge, Attractive large rear garden with the potential to extend subject to planning. The location is ideal for A13/M25 road links and is within walking distance of local shops & schools. This property will be in high demand call now to book a viewing!

Offers Over £325,000 - Freehold



While every attempt has been made to ensure the accuracy of the floorplan contained here, measurements of rooms, walls, floors and any other items are approximate and no responsibility is taken for any errors or omissions. This plan is for illustrative purposes only and should be used as a guide only for prospective purchasers. The fixtures, fittings and appliances shown have not been tested and no guarantee is given regarding their condition or efficiency. Contact us for more information.

- **3 Bed End Terrace**
- **off street parking to the rear**
- **potential to extend - subject to planning**
- **Easy Access to A13/M25 Road Links**
- **Lounge- 12'6 x 15**
- **Kitchen/Diner 9 x 12'8**
- **Attractive Large rear garden with parking**
- **Master Bedroom 11'5 x 12'6**
- **Bedroom 2 13'2 x 9**
- **Bedroom 3 9'6 x 9'7**

