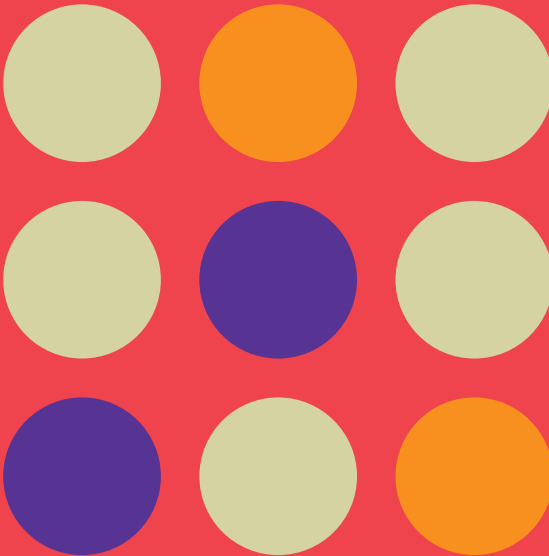


# Prince's Place Specification





## Kitchen

Supplied by Symphony.

### All kitchens will benefit from:

---

- ▶ Sleek cabinet units with matching plinths, joins and decorative panels
- ▶ Laminate worktop with matching upstand
- ▶ Single conventional oven, gas hob and extractor
- ▶ Contemporary splashback to all cookers
- ▶ Stainless steel 1.5 bowl kitchen sink with mixer tap
- ▶ Space for fridge freezer
- ▶ Space for washing machine
- ▶ Sockets sufficient for all appliances
- ▶ Decorative spotlights
- ▶ Vinyl flooring

*N.B The above image has been used for illustration purposes only.*

## Kitchen combination A

---

Woodbury Range in Platinum

*This image is for illustrative purposes only and is not a photograph representative of what has been installed at Prince's Place, Radcliffe-on-Trent.*

Whitby Tex 'Mountain' vinyl flooring



Grey Terrazzo worktop



Matt nickel wide bow handle



## Kitchen combination B

---

Woodbury Range in Gloss White

*This image is for illustrative purposes only and is not a photograph representative of what has been installed at Prince's Place, Radcliffe-on-Trent.*

Whitby Tex 'Sand' vinyl flooring



Colmar Oak worktop



Gloss White cupboards with Matt nickel wide bow handle (as shown on Combination A)



# Bathroom

Bathroom supplied by Roca. Tiles supplied by Porcelanosa.

## All bathrooms will benefit from:

---

- ▶ Contemporary three-piece white suite comprising of bath, wash basin and WC
- ▶ Sleek shower screen
- ▶ Chrome tap
- ▶ Floor to ceiling tiling around bath with tile splashback to wash basin and windowsill
- ▶ Vinyl flooring

## Bathroom combination A

---

Whitby Tex 'River' vinyl flooring



Image Silver tile



## Bathroom combination B

---

Whitby Tex 'Forest' vinyl flooring



Bottega Caliza tile



# WC

WC supplied by Roca. Tiles supplied by Porcelanosa.

## All WCs will benefit from:

---

- ▶ Contemporary two-piece white suite comprising of wash basin and WC
- ▶ Chrome tap
- ▶ Vinyl flooring

## WC combination A

---

Whitby Tex 'Mountain' vinyl flooring



Image Silver tile



## WC combination B

---

Whitby Tex 'Sand' vinyl flooring



Bottega Caliza tile



# General (Internal and external finishes)

## All homes will benefit from:

---

- ▶ Composite external doors
- ▶ Contemporary external PIR lighting to the front and rear of all properties
- ▶ Mains doorbell supplied and fitted
- ▶ Smoke alarms fitted as standard
- ▶ Bulkhead lighting to under stairs storage if applicable
- ▶ Almond White emulsion decoration to ceiling and walls, with gloss white paint to woodwork throughout
- ▶ White glossed interior doors with chrome ironmongery
- ▶ BT phone points, wired for connection to landline, master point in lounge
- ▶ Landscaping to the front of all properties and turf to the rear
- ▶ Fully enclosed rear gardens with timber fencing

*All images are used for illustrative purposes only and are representative only. They may not be the same as the actual home you purchase and the specification may differ. Images may be of a slightly different model of home, individual features such as windows, brick, carpets, paint and other material colours may vary and also the specification of fittings may vary. Any furnishings and furniture shown are not included in any sale. Please check with a member of our sales team for details of the exact specification for each property type and the associated prices.*

# Finish combinations



Plot	Combination
513	A
514	B
515	A
516	B
517	A
518	B
519	A
520	B
521	A
522	B
523	A
524	B

Plot	Combination
525	A
572	B
573	A
574	B
575	A
645	B
646	A
647	B
648	A
649	B
650	A