



Heathfield Park, NW2

TO LET - £1,800 Per Month

AVAILABLE TO LET FURNISHED FROM 10TH MARCH 2026 -A well-presented two bedroom apartment, situated on the First Floor of an attractive period property on the popular Heathfield Park.

The property provides 653 sq ft of accommodation offering an open-plan kitchen/reception room with fitted appliances, an original feature fireplace, and French doors leading out to a good-sized balcony. There are also two double bedrooms and a family bathroom with a bath & shower. The main bedroom benefits from a raised mezzanine allowing you to utilise the space available whilst the second bedroom has fitted wardrobes.

Ideally positioned to access the amenities of both Willesden Green and Walm Lane with a varied selection of delis, restaurants, and cafes. Local transport links include Willesden Green (Jubilee – Zone 2) as well as local bus routes and good road links. Viewing is recommended.



020 8450 9377

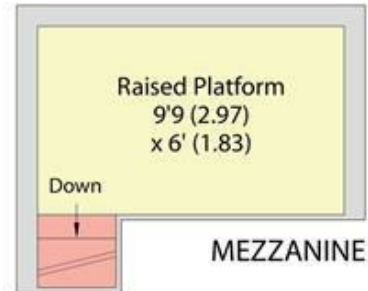
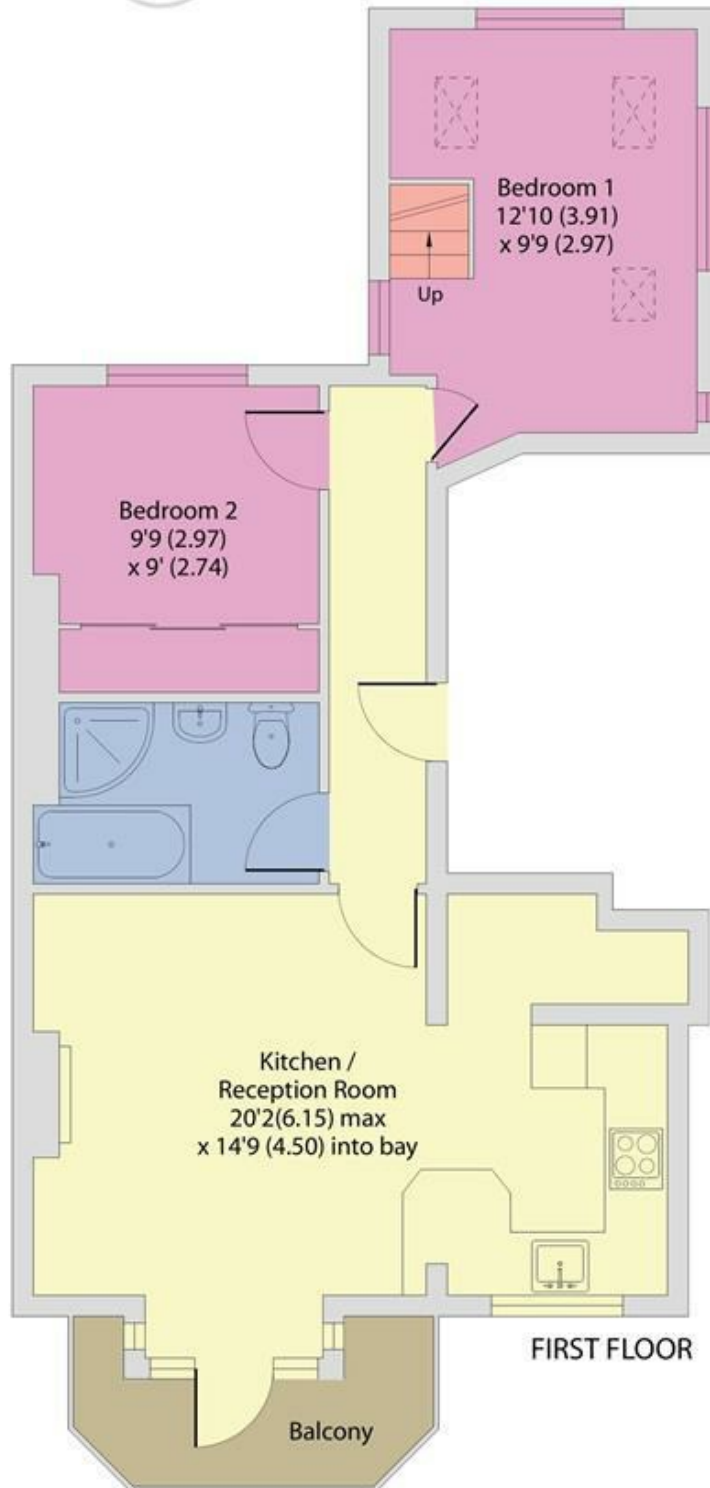
rentals@cameronsstiff.co.uk

cameronsstiff.co.uk

Heathfield Park, London, NW2

Approximate Area = 653 sq ft / 60.7 sq m

For identification only - Not to scale



EPC: D
Ref: 19537816



Floor plan produced in accordance with RICS Property Measurement 2nd Edition, incorporating International Property Measurement Standards (IPMS2 Residential). © nitchecom 2025. Produced for Camerons Stiff & Co. REF: 813176

