



Christchurch Avenue, NW6 TO LET - £2,200 Per Month

AVAILABLE TO LET NOW is this spacious, freshly painted First Floor, two bedroom apartment set within this purpose built house on the popular Christchurch Avenue.

The flat boasts 699 sq ft of accommodation and benefits from its own entrance, spacious reception room, fitted kitchen and three-piece bathroom suite. Externally, there is a private 44 ft south facing rear garden. Additional benefits include double glazing and wood flooring throughout.

Located in the ever-popular Brondesbury Conservation Area, close to Kilburn, West Hampstead & Queen's Park, with its superb array of local delis, bars and restaurants. Along with the green open spaces of Queen's Park only a short distance away. Excellent transport links into Central London include Kilburn station (Jubilee - Zone 2) & Brondesbury Park station (Mildmay- Zone 2) offering easy access into the City and Central London.

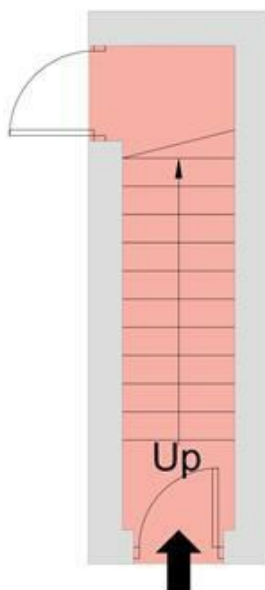
- AVAILABLE TO LET NOW- Furnished
- 2 double bedrooms
- Double glazing and wood flooring throughout
- Private rear garden
- Close to transport links
- DEPOSIT: £2,653
- COUNCIL: Brent (D)



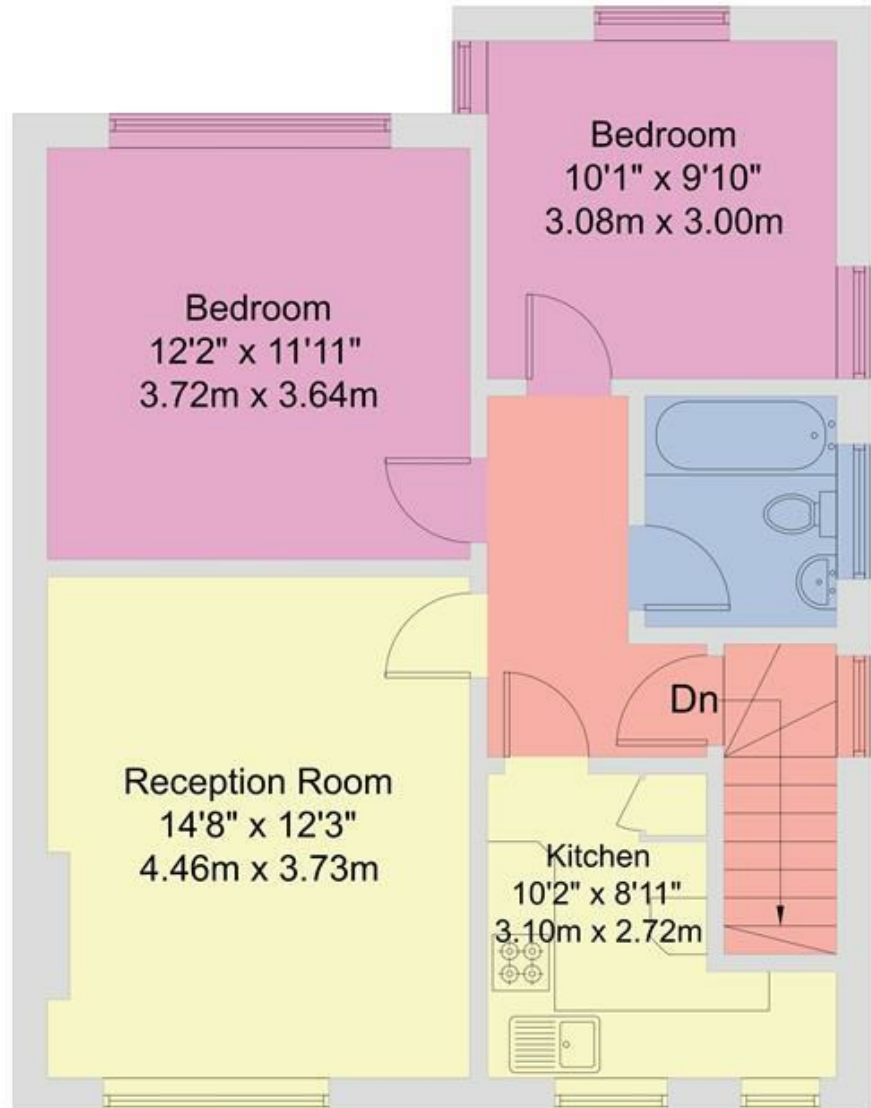
020 8450 9377

rentals@cameronsstiff.co.uk

cameronsstiff.co.uk



GROUND FLOOR



FIRST FLOOR

EPC: C

Ref: 19611366

Disclaimer: Floorplan produced in accordance with RICS guidelines. While we do not doubt the floorplan accuracy and completeness, you or your advisors should conduct a careful, independent investigation of the property in respect of monetary valuation. Produced for Camerons Stiff & Co.

