



PARKER DRIVE
WINCHESTER CITY COUNCIL



Offers over £400,000

1 Parker Drive

Waterlooville, PO7 3DA

- THREE BEDROOMS
- NHBC REMAINING
- UTILITY ROOM
- LANDSCAPED GARDEN
- DETACHED HOUSE
- DETACHED GARAGE
- KITCHEN/DINING/FAMILY ROOM
- ENSUITE TO MASTER

Simply stunning - Presented internally to show home standard, this three bedroom detached home with detached Garage was built in 2019 by David Wilson Homes and benefits from its remaining NHBC, whilst positioned on a larger than average plot within Berewood. Offering a Kitchen/Diner/Family room, Utility Room, generous Lounge and landscaped rear garden. With an ensuite to the master bedroom and two further bedrooms, this is an ideal family home; with a super positioning and outlook on the popular area of Berewood.



Step into this beautifully crafted three-bedroom detached home, built by David Wilson Homes in 2019, offering the best of modern living. Nestled in the sought-after Berewood community, this property combines contemporary style with functional, family-oriented spaces.

The spacious kitchen/dining/family room forms the heart of the home, ideal for both everyday living and entertaining. This open-plan space flows effortlessly into the landscaped garden, allowing an abundance of natural light and creating a perfect indoor-outdoor lifestyle. The well-equipped kitchen, complete with modern appliances and ample counter space, is designed to make cooking a pleasure.

Practicality is a key feature of this home, with a utility room to keep household chores neatly out of sight and a ground floor cloakroom for added convenience.

On the first floor, the master bedroom provides a peaceful sanctuary with its own ensuite bathroom, ensuring privacy and relaxation. Two further generously sized bedrooms share a stylish family bathroom, making this property perfect for families, or those needing extra space for guests or a home office.

Outside, a detached garage offers secure storage and parking, complemented by a driveway for additional off-street parking. The garden is a private retreat, perfect for enjoying sunny days in a peaceful setting.

Situated in the vibrant Berewood community, this home is within easy reach of local shops, schools, and the town park, making it an ideal location for family life.

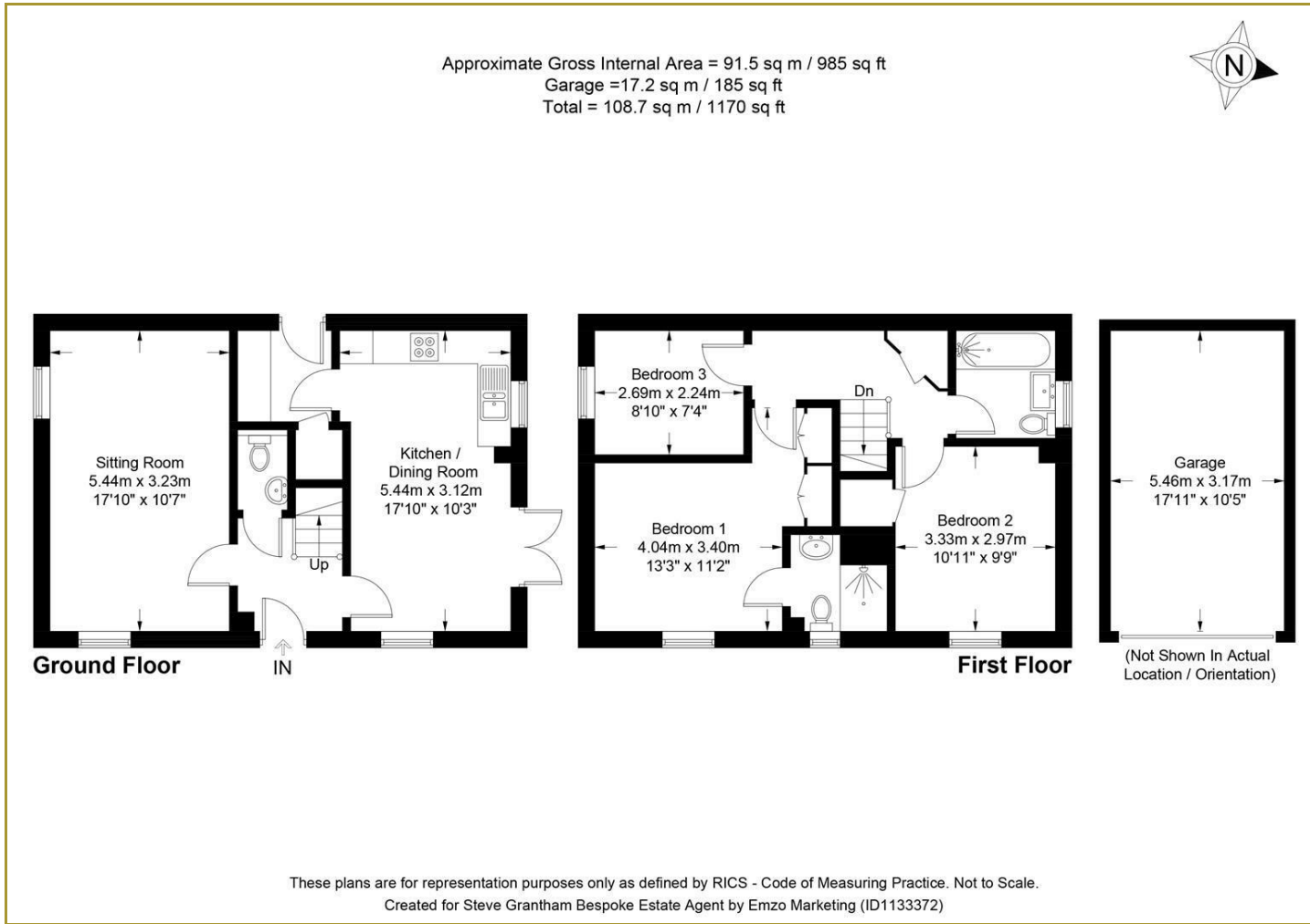
In summary, this three-bedroom detached house delivers modern comfort and convenience, with its spacious open-plan living areas, tranquil garden, and thoughtful design, providing a perfect setting to create lasting family memories.







Floor Plans

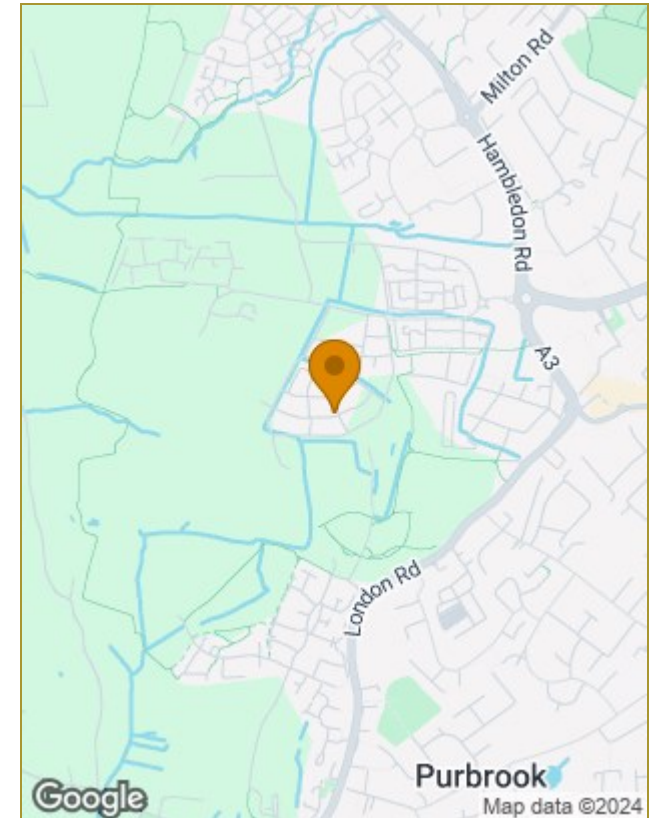


Viewing

Please contact our Steve Grantham Bespoke Office on 02393 090015 if you wish to arrange a viewing appointment for this property or require further information.

The particulars are set out as a general outline only for the guidance of intended purchasers or lessees, and do not constitute, any part of a contract. Nothing in these particulars shall be deemed to be a statement that the property is in good structural condition or otherwise nor that any of the services, appliances, equipment or facilities are in good working order. Purchasers should satisfy themselves of this prior to purchasing.

Location Map



Energy Performance Graph

