









Guide price £425,000

# 26 Hudson Gardens

Lovedean, PO8 9FA

- FOUR BEDROOMS
- TWO DRIVEWAYS
- 21FT GARAGE
- ENSUITE TO MASTER
- DETACHED HOUSE
- PARKING FOR 4-5 CARS
- KITCHEN/DINER
- NHBC REMAINING

\*\*\* Guide Price £425,000 - £450,000 \*\*\* 'The Canterbury' built by Linden Homes in 2023, is described as stylish, modern and perfect for family life. Less than 12 months old, set within the exclusive 'Catherington Park' development, it's sold with the remainder of its NHBC. Parking is a big hit here, with this home offering a double driveway on both evaluations to house circa 4 cars; plus a 21ft Garage. Featuring a spacious Kitchen/Diner with integrated appliances, Lounge overlooking the rear garden and fields beyond, ground floor Cloakroom and the first floor hosts four bedrooms with ensuite to master.



Welcome to this stunning four-bedroom detached house, a contemporary gem built in 2023 by Linden Homes. Nestled in a quiet development in Lovedean, this residence offers modern living at its finest, with thoughtful design and exceptional finishes throughout.

As you step inside, you are greeted by a spacious lounge that opens onto the rear garden, providing a seamless connection between indoor and outdoor living. The lounge overlooks picturesque fields beyond, offering a tranquil and scenic backdrop that enhances the home's serene ambiance.

The heart of the home is the modern kitchen, designed with both functionality and style in mind. High-quality appliances, sleek cabinetry, and ample counter space make this kitchen a delight for both everyday meals and entertaining guests.

The property boasts four generously sized bedrooms, each designed to provide comfort and privacy. The master bedroom features an ensuite bathroom, offering a private retreat for relaxation and rejuvenation. A well-appointed family bathroom serves the remaining bedrooms, ensuring convenience for all.

Outside, the property offers two driveways with parking for up to four cars, in addition to a spacious 21ft garage that provides ample storage, courtesy door to the rear garden and additional parking space. The rear garden, with its views of the surrounding fields, is a perfect spot for outdoor activities, al fresco dining, and unwinding in the peaceful surroundings.

Located in the charming village of Lovedean, this home is part of a quiet development that overlooks a small children's park, providing a sense of community and access to green spaces. With its modern design, exceptional amenities, and serene setting, this property is an ideal haven for families seeking a blend of comfort and tranquillity.

In summary, this four-bedroom detached house by Linden Homes offers a contemporary lifestyle with its open living spaces, scenic views, and convenient location. Embrace the perfect blend of modern elegance and natural beauty in this exceptional Lovedean home. Welcome to a place where every detail is designed to enhance your living experience and create lasting memories.





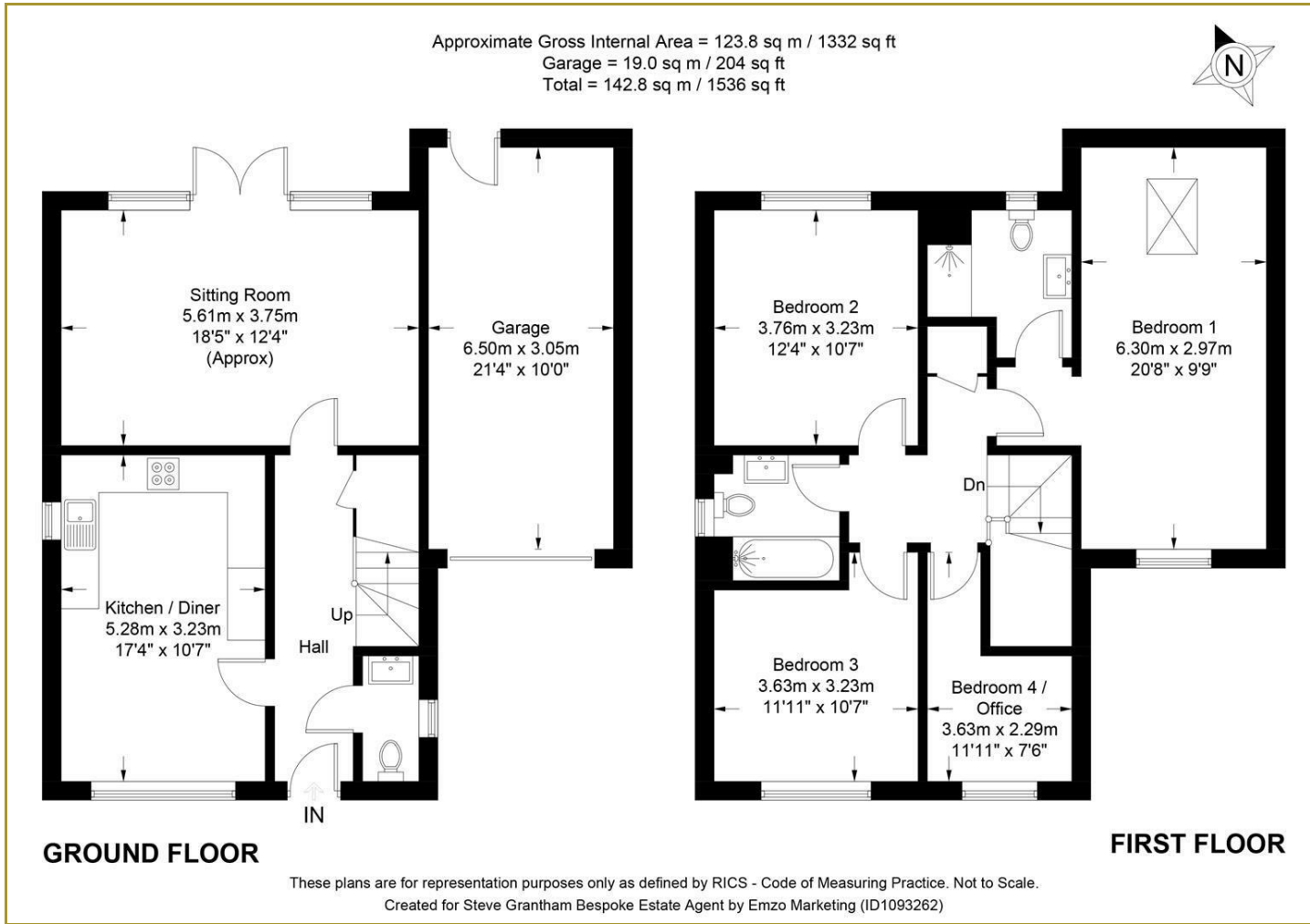








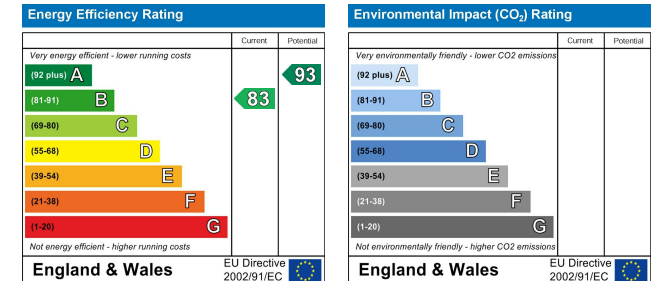
## Floor Plans



## Location Map



## Energy Performance Graph



## Viewing

Please contact our Steve Grantham Bespoke Office on 02393 090015 if you wish to arrange a viewing appointment for this property or require further information.

The particulars are set out as a general outline only for the guidance of intended purchasers or lessees, and do not constitute, any part of a contract. Nothing in these particulars shall be deemed to be a statement that the property is in good structural condition or otherwise nor that any of the services, appliances, equipment or facilities are in good working order. Purchasers should satisfy themselves of this prior to purchasing.