





19 Almond Close

Bedhampton, PO9 3LP

- EXTENDED SEMI DETACHED HOME
- EN-SUITE TO MASTER
- GOOD-SIZED DRIVEWAY
- CONSERVATORY
- BACKS ON TO FIELDS
- FOUR BEDROOMS
- WEST FACING REAR GARDEN
- 18FT LIVING ROOM
- CUL-DE-SAC LOCATION
- EASY ACCESS TO A27 & A3

This well presented & extended four bedroom semi detached home sits in a cul-de-sac location. Having a west facing garden, well proportioned driveway, en-suite to master, modern kitchen, conservatory and backing onto fields, on top of great transport links to the A3 & A27



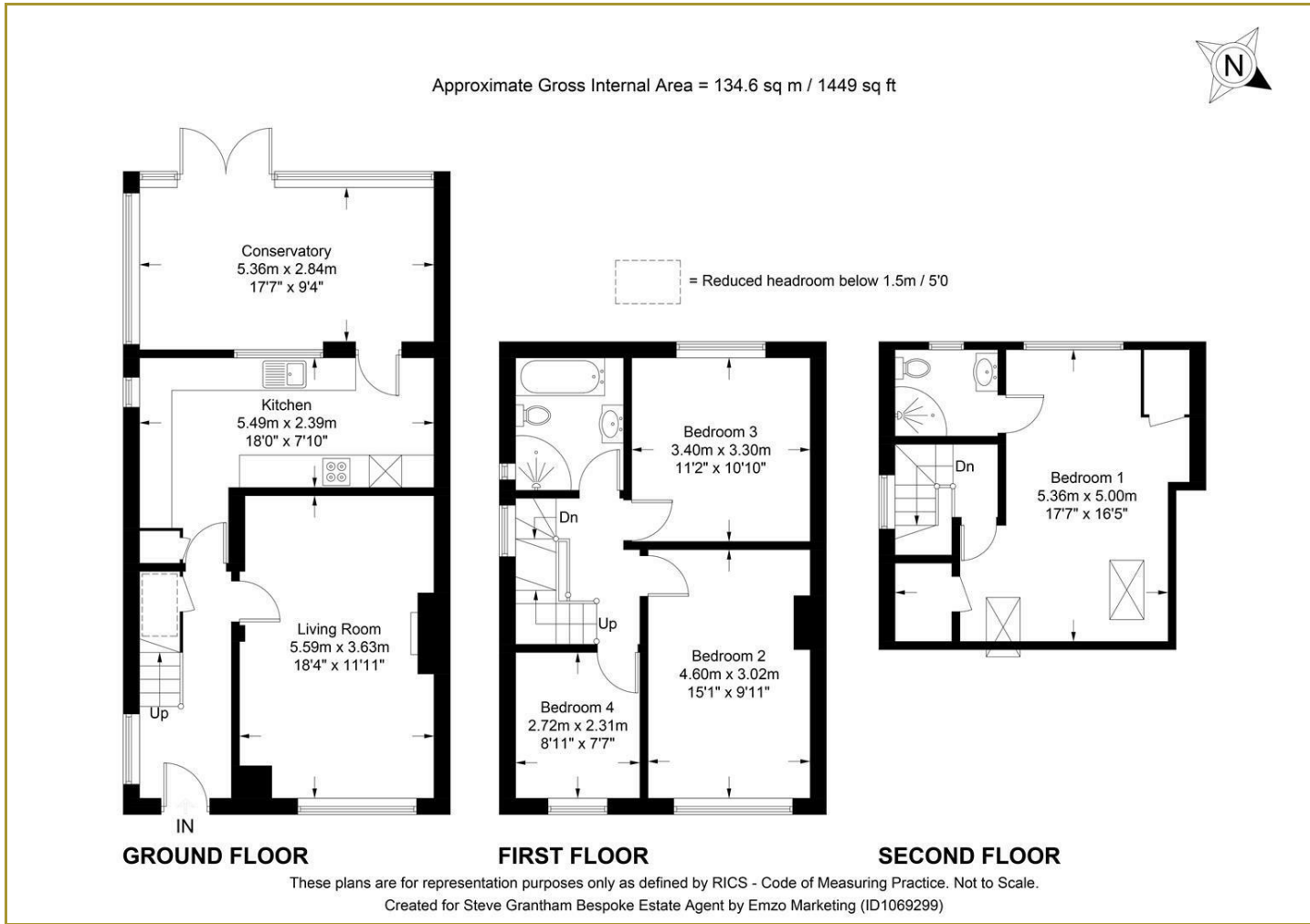
Set back from the road with a leafy outlook you are greeted by a well proportioned driveway, which allows ample off road parking. Internally you are welcomed into a good-sized entrance hallway with stairs to the first floor and doors accessing all principle rooms. To the front sits an 18ft living room with a front aspect bay window and a feature fireplace. The kitchen is a well proportioned space, with a range of fitted wall and base units and a door leads through to the conservatory. Overlooking and accessing the garden, the conservatory makes a great dining space. To the first floor there are three bedrooms, two are good-sized double rooms. The family bathroom is fitted with a white three piece suite. To the top floor is a great-sized master suite with fitted wardrobes and an en-suite shower room. The rear garden has a westerly aspect with a patio making a great space for alfresco dining and the remainder is laid to lawn.







Floor Plans

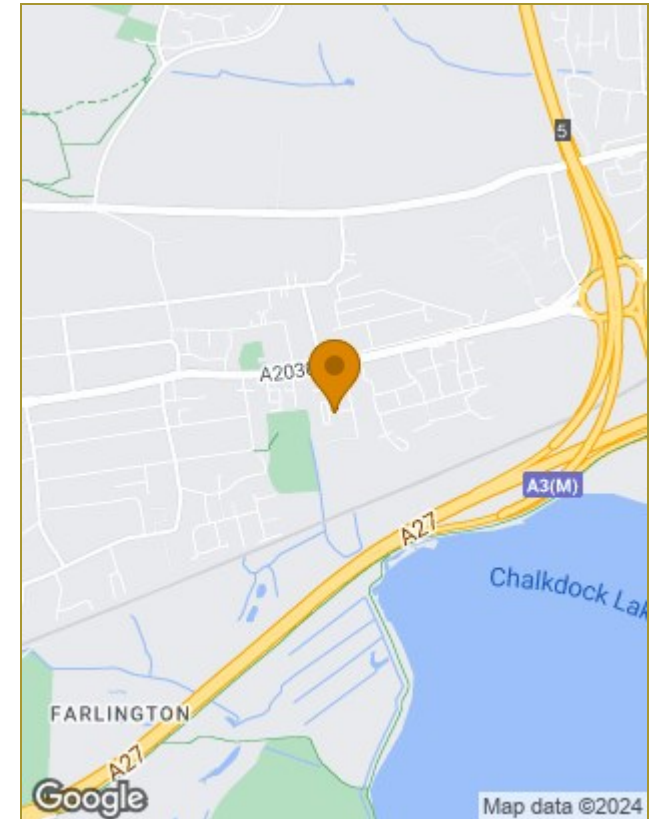


Viewing

Please contact our Steve Grantham Bespoke Office on 02393 090015 if you wish to arrange a viewing appointment for this property or require further information.

The particulars are set out as a general outline only for the guidance of intended purchasers or lessees, and do not constitute, any part of a contract. Nothing in these particulars shall be deemed to be a statement that the property is in good structural condition or otherwise nor that any of the services, appliances, equipment or facilities are in good working order. Purchasers should satisfy themselves of this prior to purchasing.

Location Map



Energy Performance Graph

