





Guide price £800,000

26b Petersfield Road

Buriton, GU31 5RZ

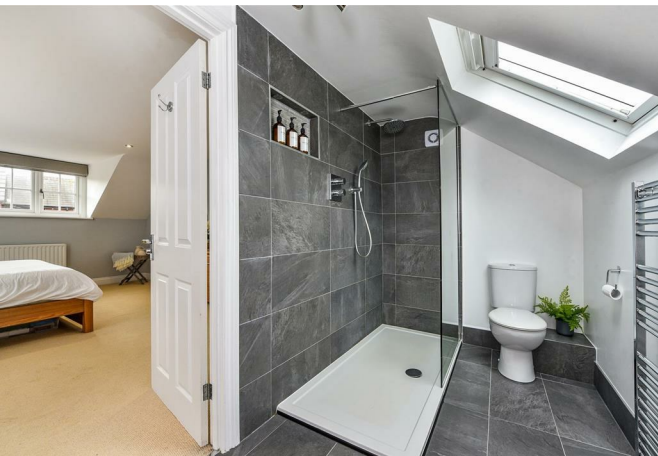
- DETACHED COTTAGE
- EN-SUITE & WALK IN WARDROBE TO MASTER
- VILLAGE LOCATION
- UTILITY ROOM
- PRIVATE REAR GARDEN
- THREE/FOUR BEDROOMS
- DOUBLE GARAGE
- OVER 1700 SQ FT OF ACCOMMODATION
- 24FT LIVING ROOM
- BEAUTIFULLY FINISHED THROUGHOUT

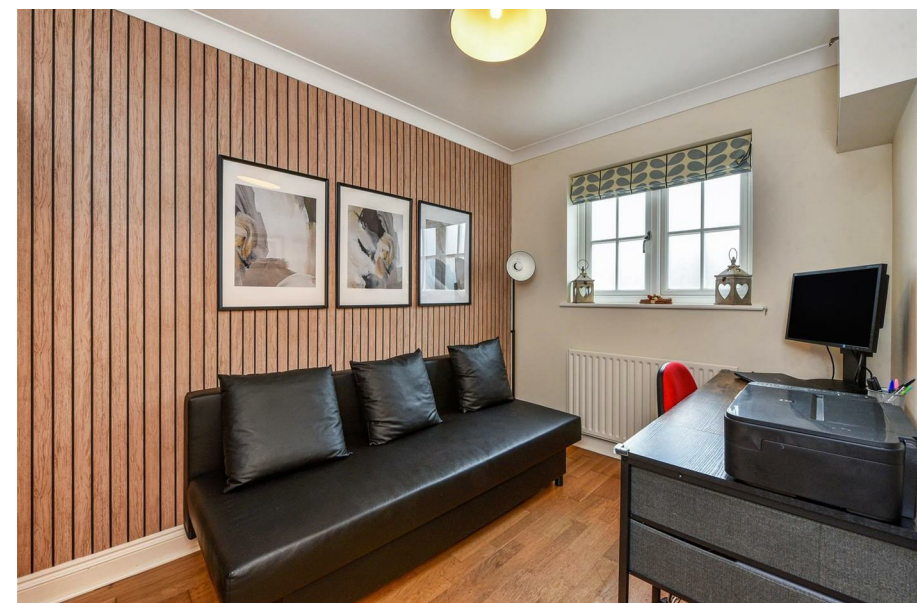
Welcome to this marvellous family home nestled in the tranquil village of Buriton. This beautifully presented property boasts spacious accommodation spread across two floors, complemented by a wonderful enclosed rear garden and a convenient double garage.



As you step through the front door, you are greeted by a light and airy entrance hall providing access to most of the ground floor rooms. The well-proportioned kitchen features a range of built-in units and ample space for all your appliances. Connecting seamlessly, the kitchen opens into the dining room, which in turn offers French doors leading to the spacious living room. The living room is particularly impressive, showcasing a fireplace with a wood burner and Bi-fold doors that extend the living space into the garden. Completing the ground floor, you'll find a versatile study/bedroom four, a cloakroom, and a utility room. Ascending the stairs, you'll discover three generously sized double bedrooms, with bedrooms two and three benefiting from built-in wardrobes. A re-fitted family bathroom serves these bedrooms, while the master bedroom stands out with its substantial size and an en-suite boasting a large walk-in shower and a spacious walk-in wardrobe. The rear garden, accessible from either side of the house, offers privacy and tranquility, surrounded by mature shrub and flower borders. It features a flint and brick storage shed, a patio, and a decked area, providing the perfect setting for outdoor relaxation and entertaining. Conveniently situated in a shared driveway, the separate double garage comes equipped with power and light, along with additional storage space in the eaves, offering practicality alongside the charm of village living.

Don't miss the opportunity to make this enchanting family home in Buriton your own retreat, where comfort and serenity await.



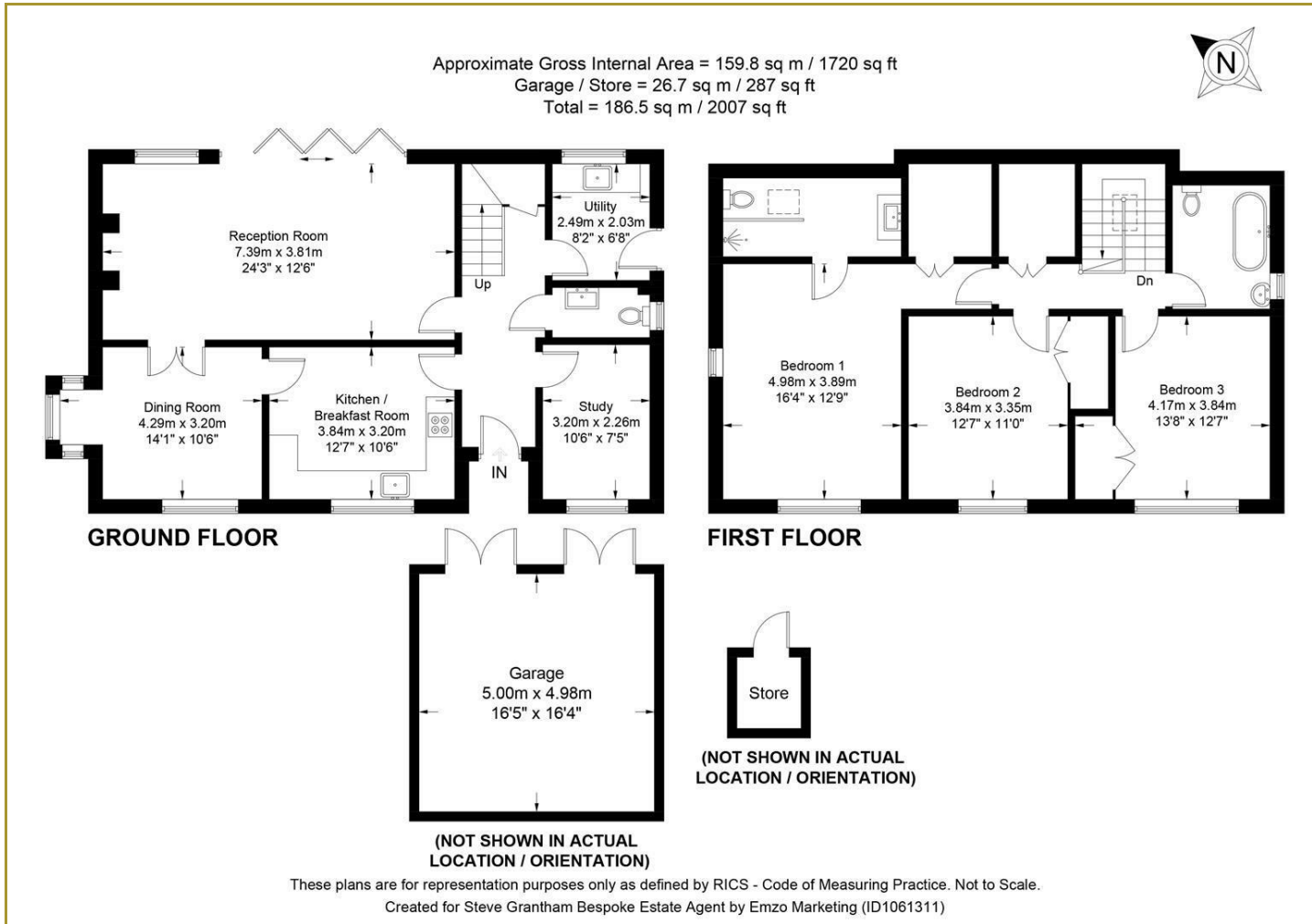




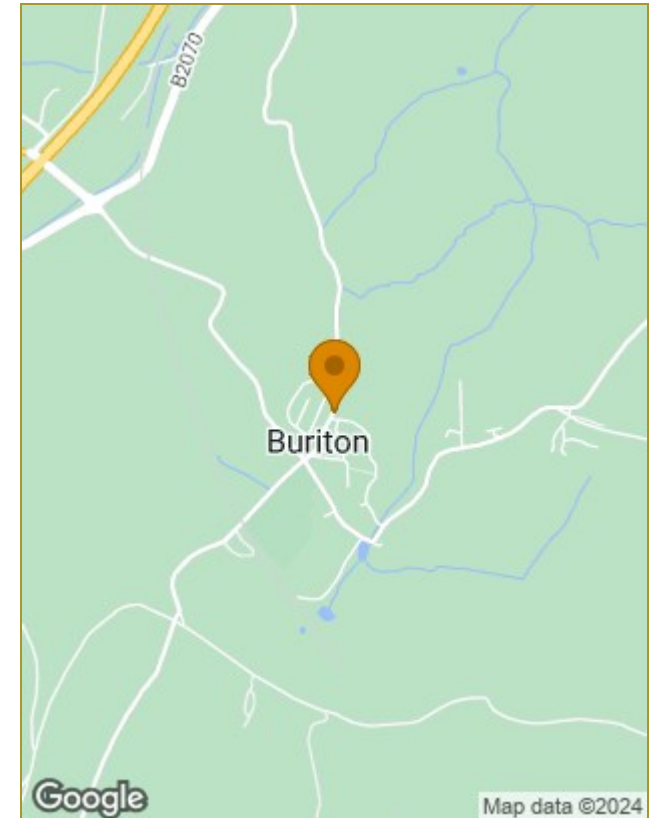
ENJOY
EVERY
MOMENT



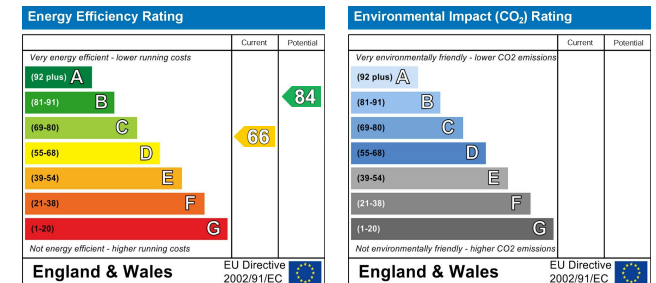
Floor Plans



Location Map



Energy Performance Graph



Viewing

Please contact our Steve Grantham Bespoke Office on 02393 090015 if you wish to arrange a viewing appointment for this property or require further information.

The particulars are set out as a general outline only for the guidance of intended purchasers or lessees, and do not constitute, any part of a contract. Nothing in these particulars shall be deemed to be a statement that the property is in good structural condition or otherwise nor that any of the services, appliances, equipment or facilities are in good working order. Purchasers should satisfy themselves of this prior to purchasing.