

BROTHERS

PROPERTY MANAGEMENT



51 Ellerdale Street

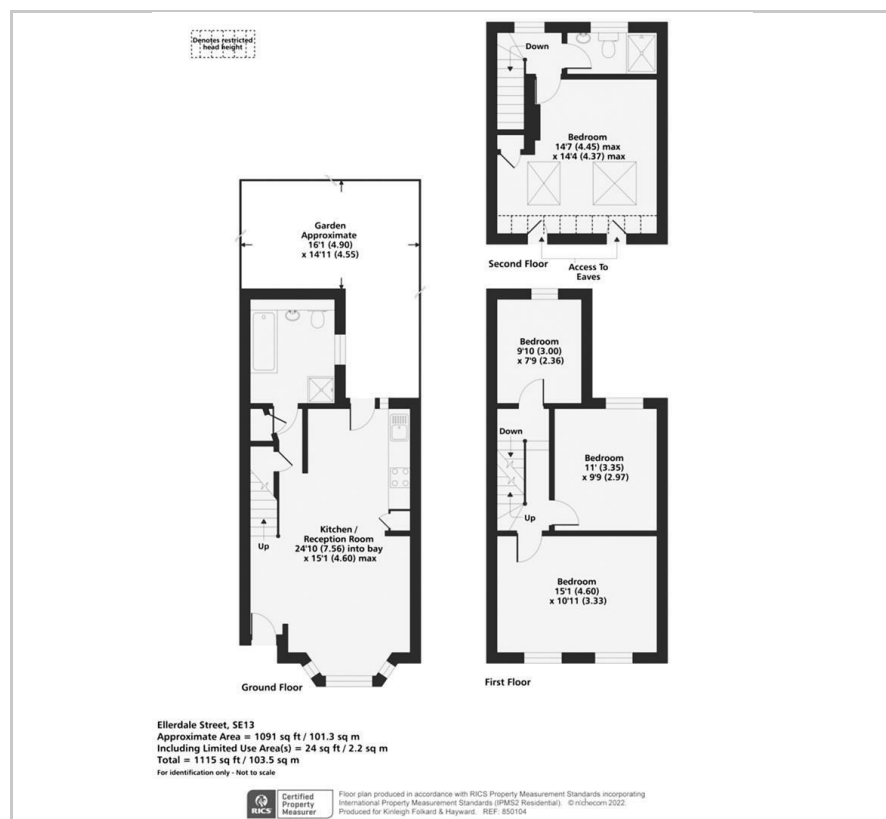
London, SE13 7JX

£3,000 Per month

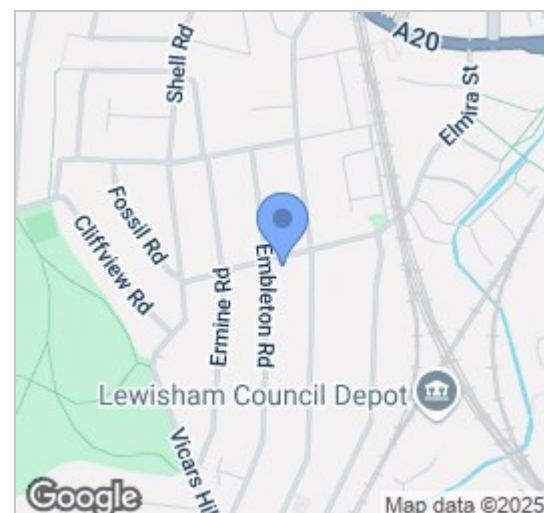


4 2 1 c

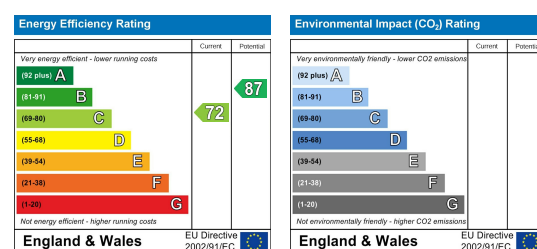
Floor Plan



Area Map



Energy Efficiency Graph



Viewing

Please contact our Brothers Property Management Office on 020 4526 6150 if you wish to arrange a viewing appointment for this property or require further information.

- Four Double Bedrooms
- Two Modern Bathrooms
- Open Plan, Modern Kitchen/Reception Room
- Refurbished Throughout
- Wooden Flooring
- Ample Storage
- Private, South Facing Garden
- Close to Ladywell
- Close to Lewisham
- Close to Hilly Fields

A spacious, four bedroom, two bathroom, Victorian home in the heart of Ladywell offers modern living with its stunning open plan kitchen/diner, en-suite and tidy south facing garden.



These particulars, whilst believed to be accurate are set out as a general outline only for guidance and do not constitute any part of an offer or contract. Intending purchasers should not rely on them as statements of representation of fact, but must satisfy themselves by inspection or otherwise as to their accuracy. No person in this firm's employment has the authority to make or give any representation or warranty in respect of the property.