

BROTHERS

PROPERTY MANAGEMENT



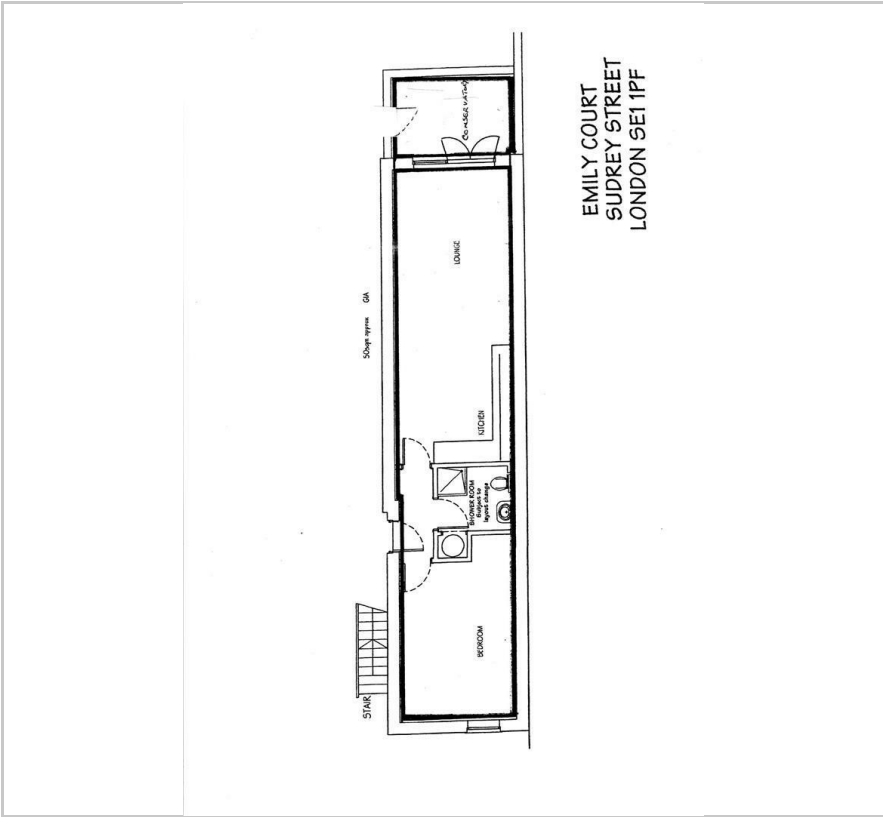
4 Emily Court

London, SE1 1PF

£1,950 Per month



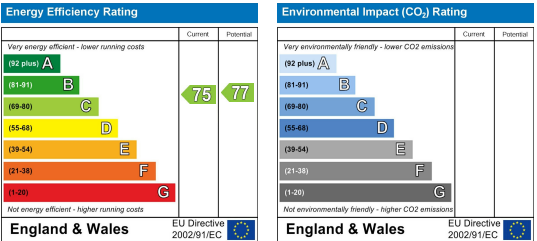
Floor Plan



Area Map



Energy Efficiency Graph



Viewing

Please contact our Brothers Property Management Office on 020 4526 6150 if you wish to arrange a viewing appointment for this property or require further information.

- Convenient Location
- Conservatory
- Furnished
- 5 Minutes to Borough Station
- 11 Minutes to Elephant and Castle
- Ground Floor
- Laminate Wood Flooring Throughout
- Secure Development
- 8 Minutes to Southwark Station
- Ample Fitted Storage



A spacious and modern one bedroom apartment in a very convenient location.



These particulars, whilst believed to be accurate are set out as a general outline only for guidance and do not constitute any part of an offer or contract. Intending purchasers should not rely on them as statements of representation of fact, but must satisfy themselves by inspection or otherwise as to their accuracy. No person in this firms employment has the authority to make or give any representation or warranty in respect of the property.