



Computer generated image of The Rosefinch plot 3

The Rosefinch

Plots 3, 12, 19 & 23

4 bedroom, 2 storey house

The Rosefinch is an eye-catching detached home which benefits from its own carport, offering you extra storage space as well as a place to park your prized vehicle. Above the carport, the master bedroom is set apart from the rest of the bedrooms, with its own en suite bathroom. Bedroom 4 offers flexibility for the home worker if needed.


COUNTRYSIDE
Homes

COUNTRYSIDE AT


stJames
Park
BISHOP'S STORTFORD


COUNTRYSIDE
Homes

The Rosefinch

Plots 3*, 12, 19 & 23

Total internal area: 112.4 sq m / 1210 sq ft

Ground Floor

KITCHEN
3.77m x 2.29m 12' 5" x 7' 6"

LIVING/DINING AREA
5.31m x 4.68m 17' 5" x 15' 4"

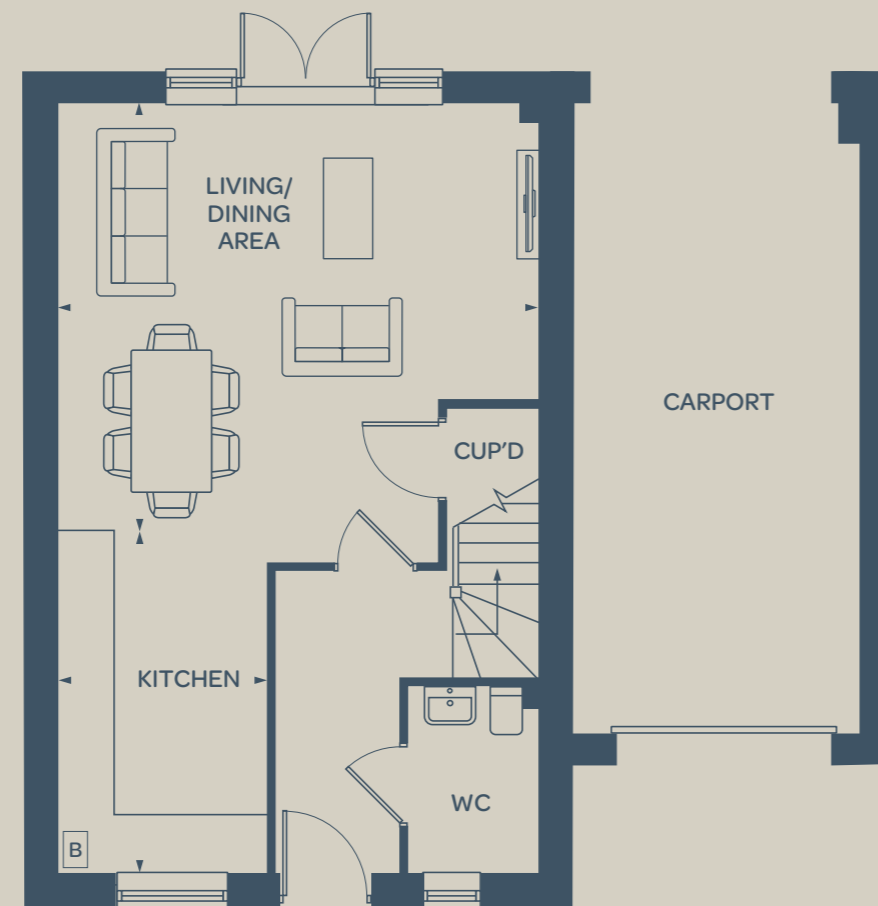
First Floor

MASTER BEDROOM
4.78m x 3.08m 15' 8" x 10' 2"

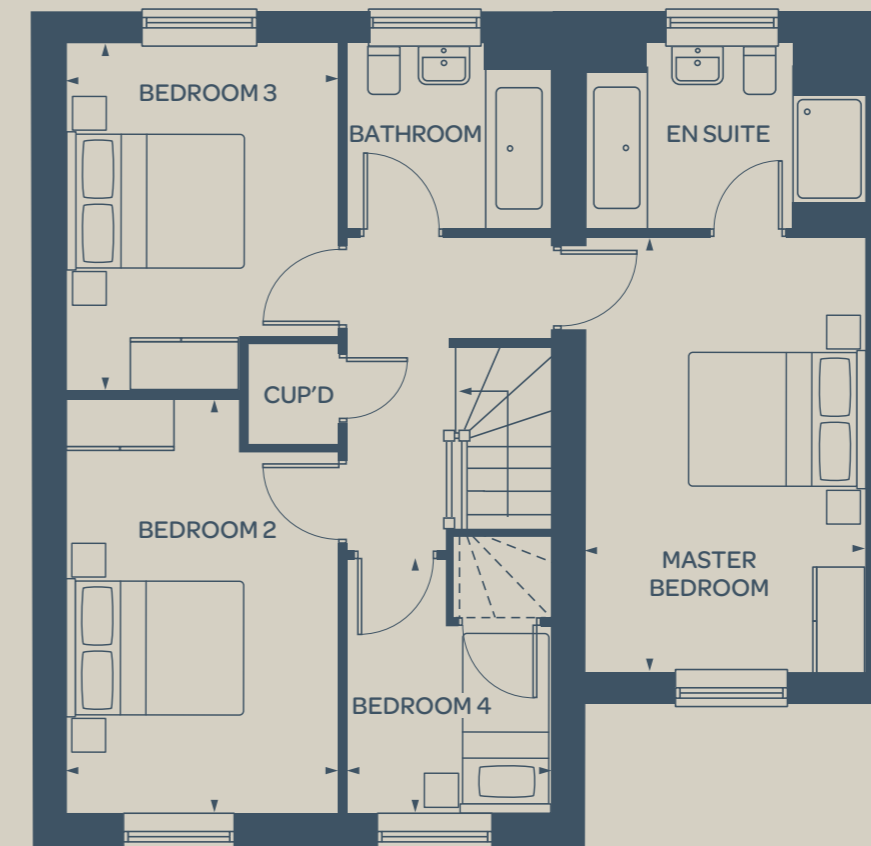
BEDROOM 2
4.55m x 3.00m 15' 0" x 9' 10"

BEDROOM 3
3.78m x 3.00m 12' 5" x 9' 10"

BEDROOM 4
2.80m x 2.21m 9' 2" x 7' 3"



Ground Floor



First Floor



* Handed plot B = Boiler (location is indicative)

The floorplan has been produced for illustrative purposes only. Room sizes shown are between arrow points as indicated on plan. The dimensions have tolerances of + or -50mm and should not be used other than for general guidance. If specific dimensions are required, enquiries should be made to the sales consultant. The floor plans shown are not to scale. Measurements are based on the original drawings. Slight variations may occur during construction. Kitchen and bathroom layouts shown and furniture positions are indicative only.

The illustrations shown are computer generated impressions of how the property may look and are indicative only. External details or finishes may vary on individual plots and homes may be built in either detached or attached styles depending on the development layout. Exact specifications, window styles and whether a property is left or right handed may differ from plot to plot. Please speak to our sales consultant for specific plot details.