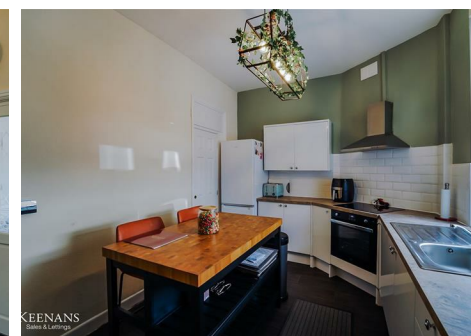




All floorplans are for guidance only. Not to scale. Please check all dimensions and shapes before making any decisions reliant upon them. Plan produced using PlanUp.



Energy Efficiency Rating		Current	Potential
Very energy efficient - lower running costs			
(92 plus) A			
(81-91) B			79
(69-80) C			
(55-68) D		54	
(39-54) E			
(21-38) F			
(1-20) G			
Not energy efficient - higher running costs			
England & Wales		EU Directive 2002/91/EC	

These particulars, whilst believed to be accurate are set out as a general outline only for guidance and do not constitute any part of an offer or contract. Intending purchasers should not rely on them as statements of representation of fact, but must satisfy themselves by inspection or otherwise as to their accuracy. No person in this firm's employment has the authority to make or give any representation or warranty in respect of the property.

Scholes Street, Bury, BL8 2RA

£160,000

MODERN HOME READY TO MOVE IN

Welcome to this charming end terrace house located on Scholes Street in Bury! This property boasts a spacious and modern design, perfect for those looking for a comfortable and stylish home.

As you step inside, you'll be greeted by a reception room that offers a versatile space for relaxing and entertaining. With two cosy bedrooms, there's plenty of room for a small family or guests to stay over. The bathroom is well-appointed and provides convenience for your daily routines.

The modern decor and appliances throughout the house add a touch of elegance and make it easy for you to move in without the hassle of renovations. Imagine cooking in the sleek kitchen or enjoying a cup of tea in the well-lit living space. To the rear, there is a well-maintained yard and a car parking space.

Conveniently situated close to local amenities, you'll have easy access to shops, restaurants, and other essentials. Additionally, the property is located near local transport links, making it a breeze to explore the surrounding areas or commute to work.

Don't miss out on the opportunity to make this lovely house your new home. Book a viewing with our Bury branch today and envision yourself living in this delightful property on Scholes Street!

Scholes Street, Bury, BL8 2RA

£160,000



- End Terrace Property
- Utility Room
- Enclosed Yard To Rear
- EPC Rating E
- Two Double Bedrooms
- Cosy Reception Room
- Tenure Leasehold
- Three Piece Bathroom Suite
- Contemporary Fitted Kitchen
- Council Tax Band A

Ground Floor

Vestibule

5'0 x 3'7 (1.52m x 1.09m)

UPVC double glazed entrance door to reception room.

Reception Room One

14'2 x 14'0 (4.32m x 4.27m)

UPVC double glazed window, central heating radiator, television point, electric fire with marble surround, wooden mantel and door to inner hall.

Inner Hall

Open access to kitchen/dining area and stairs to first floor.

Kitchen

13'11 x 12'11 (4.24m x 3.94m)

UPVC double glazed window, central heating radiator, range of wall and base units with laminate worktops, stainless steel sink and drainer with mixer tap, integrated oven with four point electric hob and extractor hood, tiled splashback, space for fridge freezer, laminate flooring, doors to understairs storage and utility room.

Utility Room

13'1 x 4'2 (3.99m x 1.27m)

UPVC double glazed window, central heating radiator, laminate worktop, tiled splashback, plumbing for washing machine, boiler, laminate flooring and door to rear.

First Floor

Landing

13'11 x 4'2 (4.24m x 1.27m)

Doors to two bedrooms and family bathroom.

Bedroom One

14'0 x 10'10 (4.27m x 3.30m)

UPVC double glazed window, central heating radiator and feature fireplace.

Bedroom Two

9'7 x 8'4 (2.92m x 2.54m)

UPVC double glazed window and central hearing radiator.

Bathroom

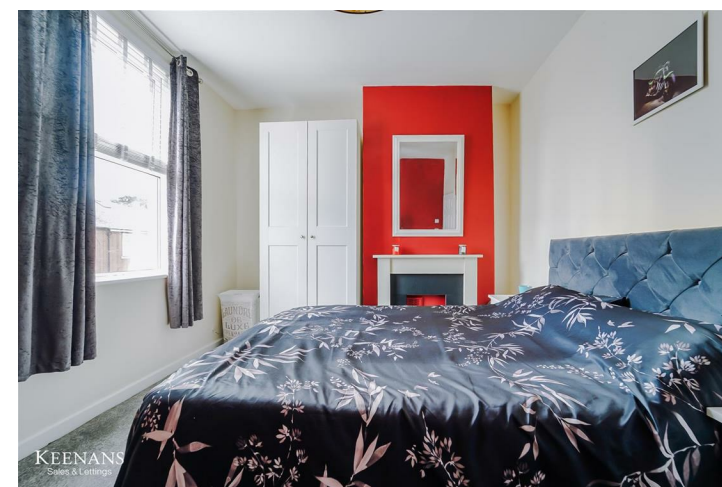
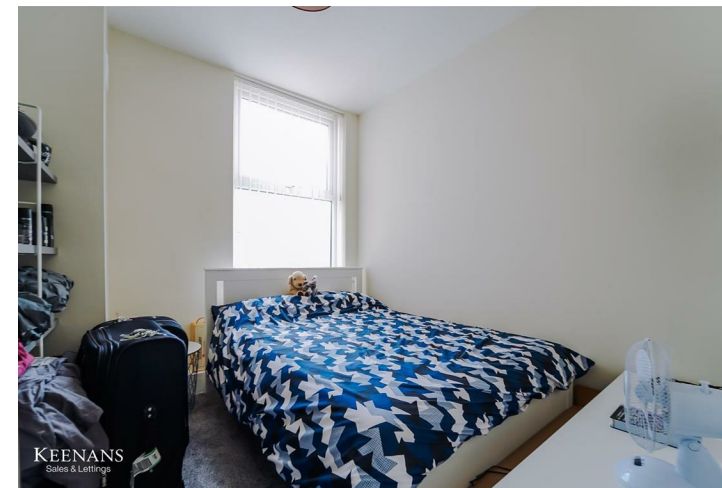
10'11" x 5'1" (3.33m x 1.55m)

UPVC double glazed window, central heating radiator, vanity top wash basin with mixer tap, dual flush WC, panel bath with mixer tap, tiled elevations and laminate flooring.

External

Rear

Enclosed paved yard.



Tel: 01617510340

www.keenans-estateagents.co.uk