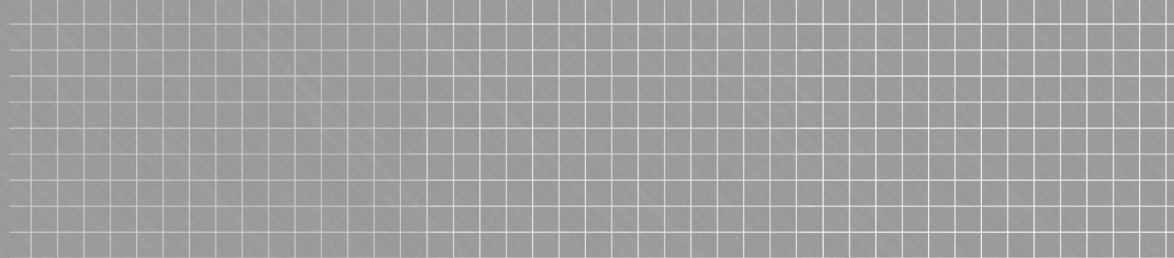




Your Logo



1 The Island Bridge Road, Horbury

Offers Over £400,000

🛏️ 4 🚗 2 🛋️ 3

- REFERENCE JI 0641
- STUNNING RIVERSIDE FAMILY HOME
- 3 RECEPTION ROOMS
- 2 BATH/SHOWER ROOMS
- LARGE PATIO & RIVERSIDE GARDEN
- SUITABLE FOR CASH BUYERS ONLY
- RIVERSIDE LOCATION IN CENTRAL HORBURY BRIDGE
- 4 BEDROOMS
- OFF STREET PARKING, GARAGE & STORE/ SUMMERHOUSE
- SPACIOUS ANNEXE IDEAL FOR A VARIETY OF USES



Please quote JI 0641 when enquiring about this property.

PLEASE NOTE THIS PROPERTY IS AVAILABLE TO CASH BUYERS ONLY -see Agent's Note for Details

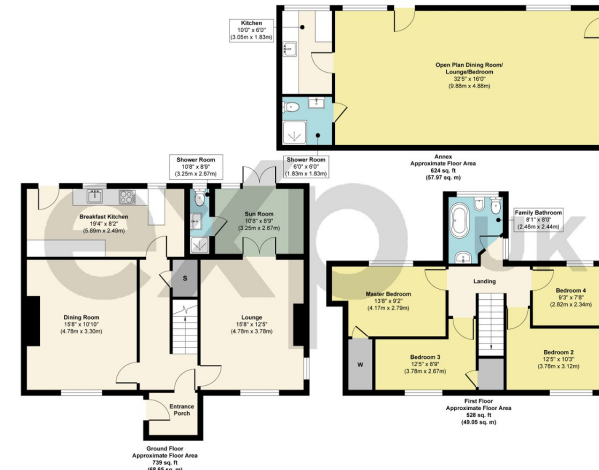
STUNNING RIVERSIDE FAMILY HOME WITH POTENTIAL BUSINESS USE

This stunning riverside 4 Bedroom Detached family home is tucked away in a quiet location, close to the centre of Horbury Bridge, near to excellent local amenities, transport links and in the catchment of high performing local schools. Boasting 3 Reception Rooms, 4 Bedrooms, and 2 Bathrooms and extensive peaceful riverside gardens, as well as a spacious self contained Annexe ideal for a variety of uses including for teenagers/elderly relatives and visitors, a bar/games room/gym. or office/business space for those wishing to work from home. The Annexe can also offer business potential - subject to any





The Island, Horbury Bridge



Approx. Gross Internal Floor Area 1891 sq. ft / 175.67 sq. m
Illustration for identification purposes only, measurements are approximate, not to scale.
Produced by Elements Property

