

Voase Way, Beverley, East Riding of Yorkshire, HU17 0WL**£440,000****4 2 2**

REFERENCE BA0665 This four bedroom family home that was built in 2022 occupies an enviable position within this highly popular development that falls within a level walk of Beverley town centre. The accommodation is very well proportioned throughout and has been improved by my clients with the inclusion of fitted wardrobes to all bedrooms, upgraded floor coverings and a superbly landscaped west facing rear garden. In brief, the accommodation comprises a cloakroom, lounge, study, kitchen/dining room, utility room, well proportioned bedrooms, en-suite shower room, family bathroom, west facing rear garden, and garage and driveway parking for three vehicles. The property is offered with no onward chain.

- Cloak Room
- Well Proportioned Lounge
- Utility Room
- En-Suite Shower and Family Bathroom
- Gas Fired CH/Double Glazing
- Study
- Spacious Kitchen/Dining Room
- Four Generous Sized bedrooms
- Landscaped Gardens/Garage
- No Onward Chain

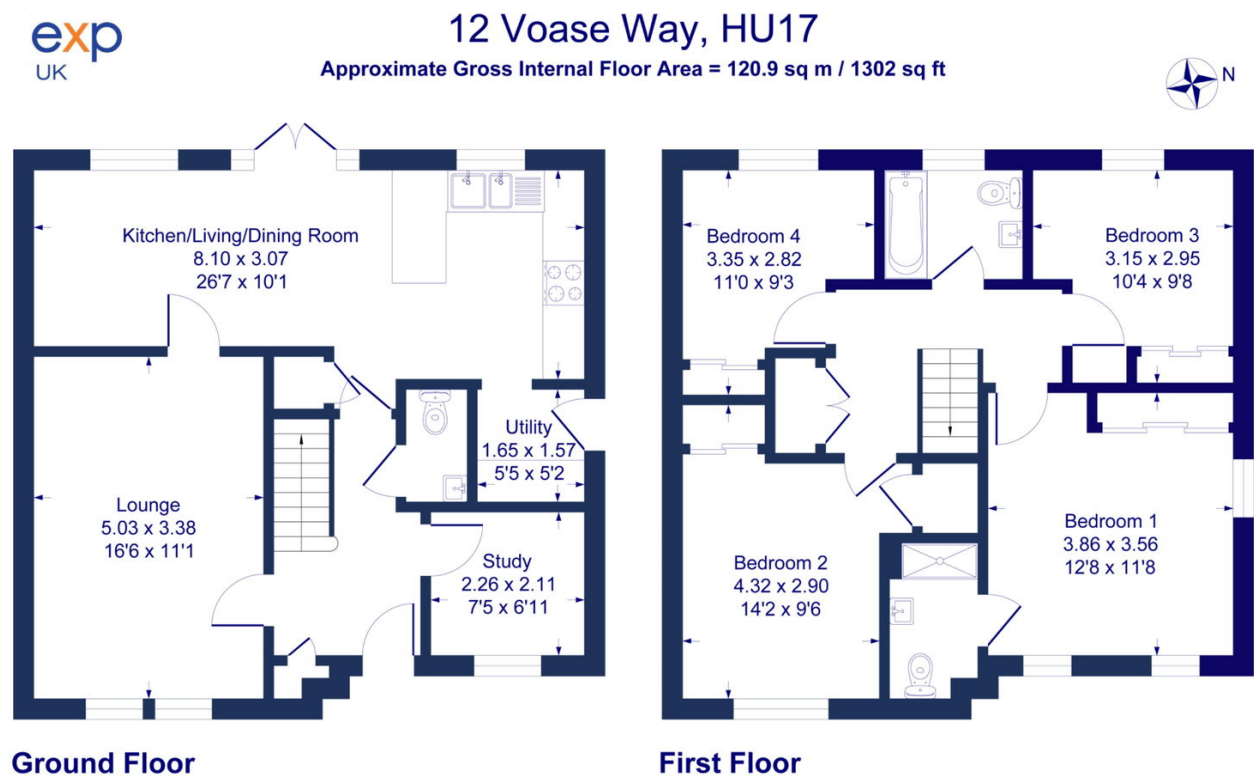


Illustration for identification purposes only, measurements are approximate, not to scale.