



Ryefield Gardens, Ecclesall, Sheffield
Sheffield

Guide Price
£220,000 - £230,000

Property Type: Flat

Bedrooms: 2 | **Bathrooms:** 1 | **Receptions:** 1

Tenure: Leasehold

Council Tax Band: C

Guide Price £220,000 - £230,000. A stunning two-bedroom second floor apartment, recently refurbished throughout and finished to an exceptional standard. Offering stylish open-plan living with a modern kitchen, contemporary bathroom, fitted wardrobes and the added benefit of a private garage, this immaculate home is set within a leafy and well-established south-west suburb of Sheffield. Perfect for those seeking a move-in-ready property with excellent local amenities, transport links and green spaces close by.

Property Reference: RB0377

- Stylish Two-bedroom Second-Floor Apartment
- Recently Refurbished throughout to a High Standard
- Bright Open-Plan Living and Kitchen Area
- Contemporary Bathroom with Spacious Walk-In Shower
- Includes Private Garage for Parking or Storage
- Excellent Sought After Location
- Leasehold
- Viewing Highly Advised
- Property Reference: RB0377
- Chain Free



Guide Price £220,000 - £230,000. A stunning two-bedroom second floor apartment, recently refurbished throughout and finished to an exceptional standard. Offering stylish open-plan living with a modern kitchen, contemporary bathroom, fitted wardrobes and the added benefit of a private garage, this immaculate home is set within a leafy and well-established south-west suburb of Sheffield. Perfect for those seeking a move-in-ready property with excellent local amenities, transport links and green spaces close by.

The property features a bright open-plan living and kitchen space, complete with wooden flooring and a striking feature fireplace. The contemporary kitchen offers sleek black cabinetry, gas hob, integrated oven and space for both a large fridge/freezer and washing machine.

There are two well-proportioned bedrooms, each with fitted wardrobes, with the principal bedroom further enhanced by a useful dressing area. The bathroom is fresh and modern, fitted with a large walk-in shower and quality fixtures.

Externally, the apartment benefits from a private garage, ideal for secure parking or additional storage. Situated in a peaceful, established residential area with excellent transport links, shops, schools and green spaces close by, this superb home is perfectly suited to professionals or downsizers seeking stylish, low-maintenance living within easy reach of Sheffield city centre.

Property Reference: RB0377



APPROXIMATE GROSS INTERNAL AREA = 65.8 SQ M / 708 SQ FT

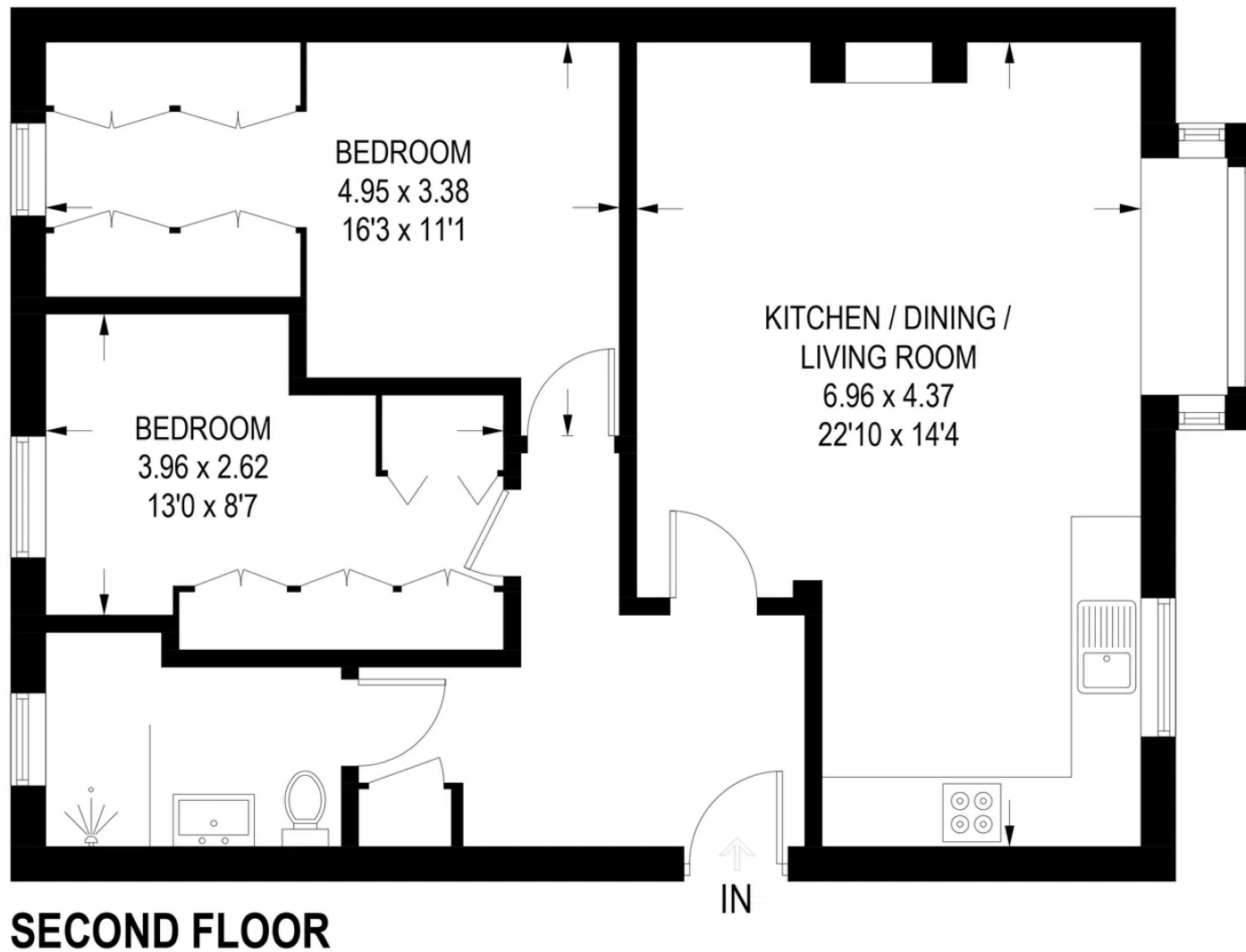


Illustration is for identification purposes only,
measurements are approximate, not to scale.