

Pasture Terrace, Beverley, HU17 8DR

£319,950

2 1 1



REFERENCE BA0665.

This property was built in about 2011 to a very high standard using quality materials to create a bespoke home that sits very comfortably within this highly desirable road in Beverley and will appeal to those buyers that wish to down size, those that wish to enjoy all that Beverley offers from a lifestyle point of view or those that simply wish to have a minimum maintenance lock up and go property. Accommodation is arranged over three levels with all rooms being very well proportioned and there is a great sense of space and light. The opportunity to buy a home of this type and in this location is rare indeed.

- Sought After Location
- Individual Home
- Cloakroom
- Lounge
- Fitted Kitchen/Breakfast Room
- Two Generous Double Bedrooms
- Dressing Room/Office
- Four Piece Bathroom Suite
- Gas Fired CH/ Underfloor and Radiators
- Walled Garden/ Covered Driveway Parking



18a Pasture Terrace HU17

Approximate Gross Internal Floor Area = 100.9 sq m / 1086 sq ft
(Excluding Car Port)

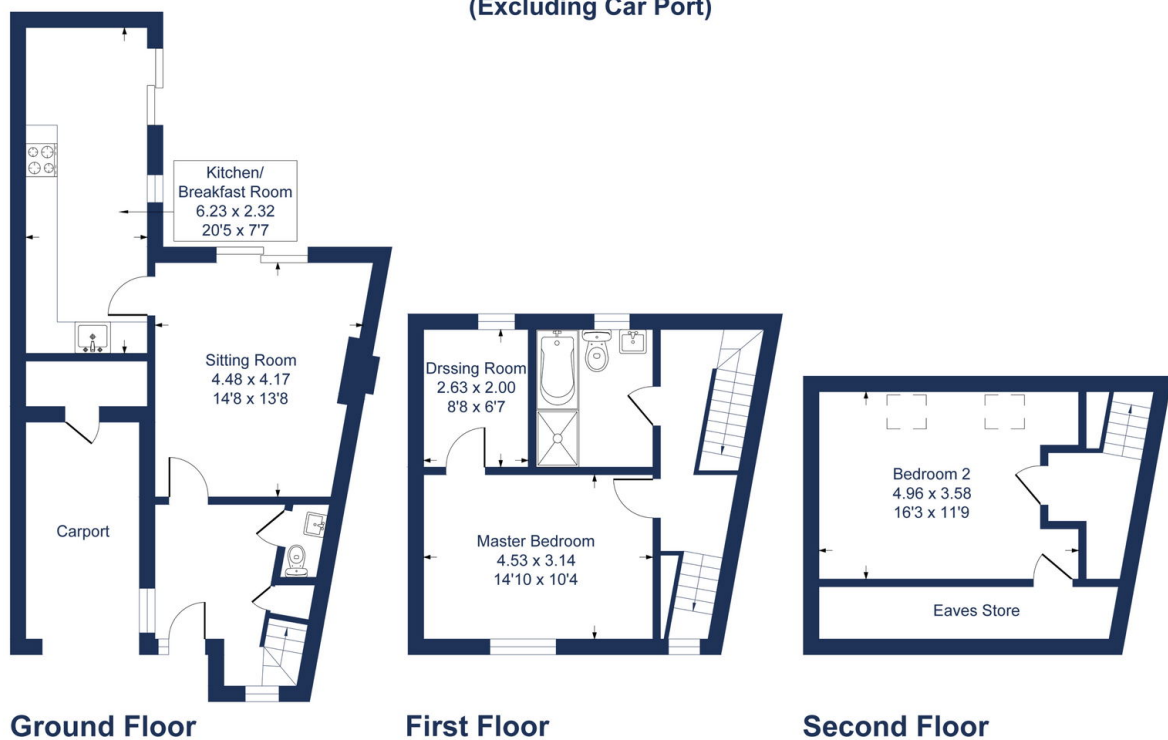


Illustration for identification purposes only, measurements are approximate, not to scale.