

St. Matthews Close, Renishaw

Offers In Region Of £150,000

 2  1  1



- Modern 2-bed townhouse
- Stylish kitchen/diner with French doors
- Contemporary family bathroom
- Enclosed rear garden with decking
- Allocated off-road parking
- Bright lounge
- Two double bedrooms with storage
- Handy downstairs WC
- Easy access to the Trans Pennine trail
- Property Ref RB0377.

APPROXIMATE GROSS INTERNAL AREA = 64.7 SQ M / 697 SQ FT

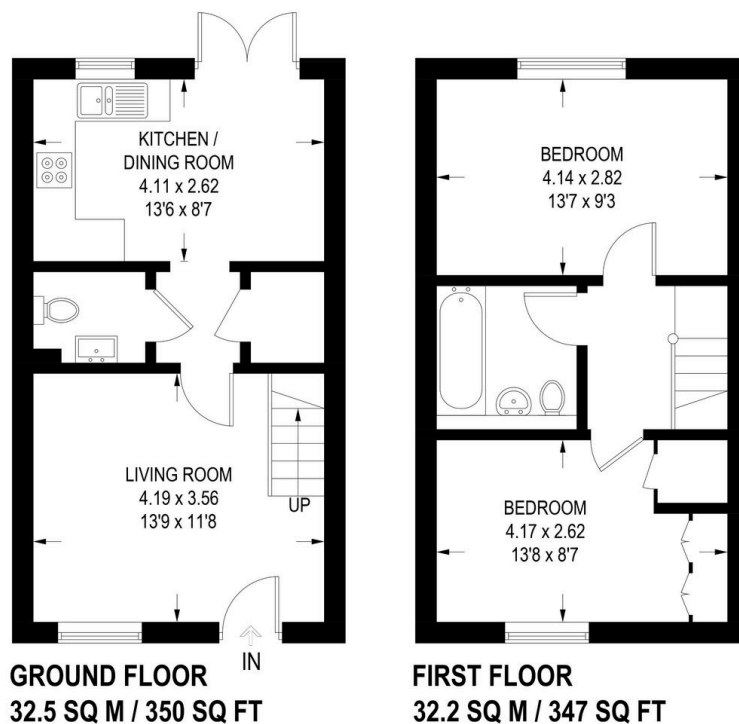


Illustration is for identification purposes only,
measurements are approximate, not to scale.

Nestled in a quiet cul-de-sac in the sought-after village of Renishaw, this beautifully presented two-bedroom townhouse offers stylish and practical living ideal for first-time buyers, downsizers, or investors. Property Ref RB0377.