

Chestnut Avenue, Armthorpe, Doncaster, DN3 2EN

Offers In Region Of £122,995

🛏 3 🚿 1 🚽 1

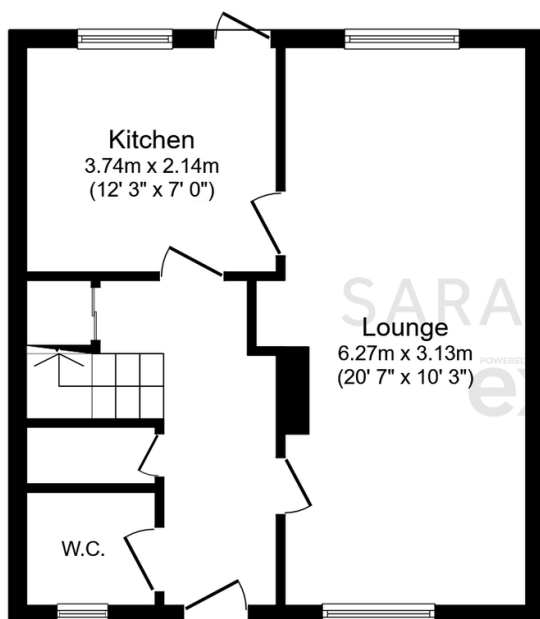


Ideally suited to first-time buyers or investors. Upon entering you're greeted by an entrance hall leading to a spacious reception room. Adjacent, you'll find a kitchen that's flooded with natural light. The property boasts three well-proportioned bedrooms. The first bedroom is a generous double, complete with built-in wardrobes, the second bedroom is also a sizable double, offering flexibility for use as a guest room or home office. The third bedroom, a comfortable single, is ideally suited as a child's room or study.

The home is equipped with a single bathroom and a convenient downstairs w.c. Adding to the charm of the property is a private, enclosed rear garden with outbuildings.

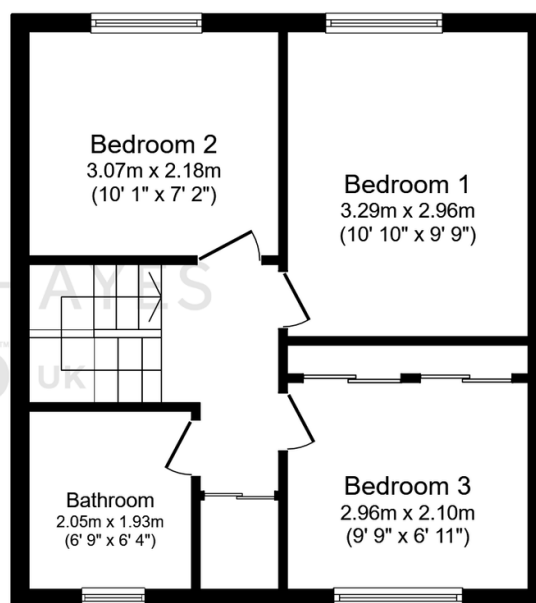
Key Features

- QUOTE SH0316 WHEN CALLING TO ENQUIRE OR BOOK A VIEWING
- SPACIOUS 3 BEDROOM MID TERRACE
- MASTER BEDROOM WITH BUILT IN WARDROBES
- FANTASTIC MOTORWAY LINKS TO M18/ M1/A1
- IN CLOSE PROXIMITY TO ALL LOCAL AMENITIES
- IDEAL FOR FIRST TIME BUYERS / INVESTORS
- DOWNSTAIRS W.C FOR CONVENIENCE
- PRIVATE ENCLOSED REAR GARDEN
- GOOD PUBLIC TRANSPORT LINK
- TENURE FREEHOLD. EPC RATING C. COUNCIL TAX BAND A



Ground Floor

Floor area 42.0 sq.m. (452 sq.ft.)



First Floor

Floor area 42.0 sq.m. (452 sq.ft.)

Total floor area: 83.9 sq.m. (904 sq.ft.)

This floor plan is for illustrative purposes only. It is not drawn to scale. Any measurements, floor areas (including any total floor area), openings and orientations are approximate. No details are guaranteed, they cannot be relied upon for any purpose and do not form any part of any agreement. No liability is taken for any error, omission or misstatement. A party must rely upon its own inspection(s). Powered by www.Propertybox.io