

## Hollybank Crescent, Intake

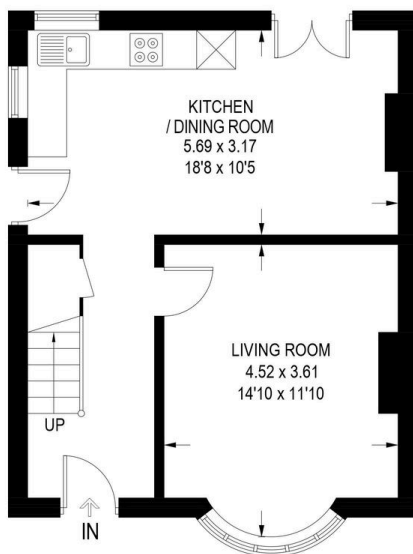
Offers In Region Of £240,000

 3  1  1

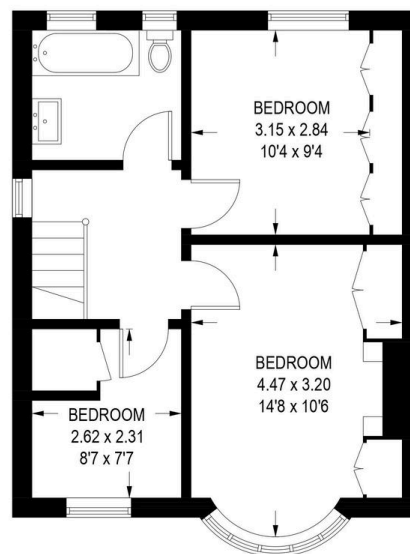


- Three-bedroom semi-detached home
- Bay-windowed lounge with modern fireplace and media wall
- French doors leading out to a fully enclosed rear garden
- Driveway to the front
- Fully refurbished throughout
- Bright entrance hallway with stylish oak and glass balustrade
- Spacious open-plan dining kitchen with island
- Modern family bathroom
- Excellent transport links
- Property ref RB0377.

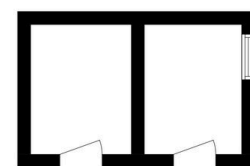
APPROXIMATE GROSS INTERNAL AREA = 84.2 SQ M / 906 SQ FT  
(EXCLUDING OUTBUILDING)



**GROUND FLOOR**  
42.3 SQ M / 455 SQ FT



**FIRST FLOOR**  
41.9 SQ M / 451 SQ FT



**OUTBUILDING**  
(NOT SHOWN IN ACTUAL  
LOCATION / ORIENTATION)

Illustration is for identification purposes only,  
measurements are approximate, not to scale.

Situated in the sought-after suburb of Intake, this beautifully presented three-bedroom semi-detached home offers a superb blend of modern finishes and spacious living, ideal for families or first-time buyers alike. Property Ref RB0377.