

Oakwood Drive, Armthorpe, Doncaster, DN3 3BD

Offers In Region Of £165,000

🛏 3 🚗 1 🚲 1



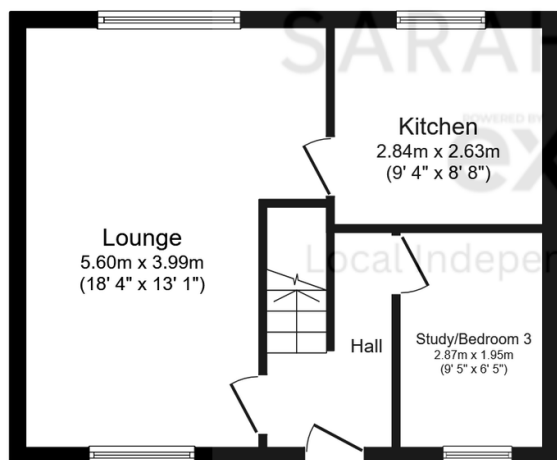
Unique opportunity to purchase this dormer bungalow at a great price, nestled in a sought-after location. The property is well served by local amenities and public transport links, promising a balance of convenience and tranquillity. The vicinity also boasts green spaces, offering an environment that fosters relaxation and wellbeing. NO ONWARD CHAIN

Large driveway to the front, providing ample parking space. At the rear, a good size, low maintenance garden, complete with a patio area that is perfect for outdoor dining/entertaining. A detached garage offers additional storage or parking options.

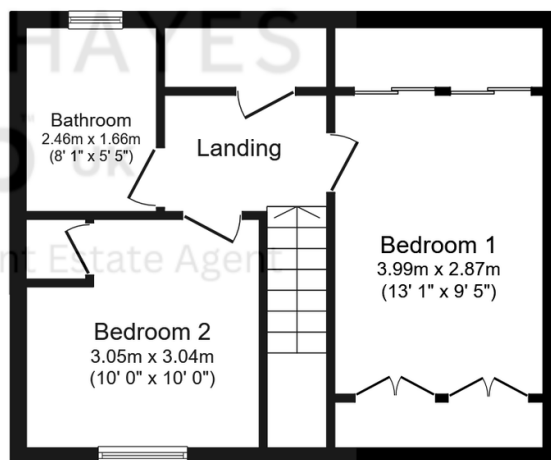
The property has an EPC rating of D and falls within council tax band B.

Key Features

- QUOTE SH0316 WHEN CALLING TO ENQUIRE OR BOOK A VIEWING
- LOCATED IN A SOUGHT AFTER LOCATION
- MASTER BEDROOM WITH BUILT IN WARDROBES
- LOW MAINTENANCE GARDENS WITH PATIO AREA
- LARGE DRIVEWAY TO THE FRONT
- ON ONWARD CHAIN
- SPACIOUS LIVING ROOM
- THREE WELL PROPORTIONED BEDROOMS
- DETACHED GARAGE TO THE REAR
- TENURE FREEHOLD. EPC RATING D. COUNCIL TAX BAND B



Ground Floor
Floor area 38.6 sq.m. (416 sq.ft.)



First Floor
Floor area 38.6 sq.m. (416 sq.ft.)

Total floor area: 77.3 sq.m. (832 sq.ft.)

This floor plan is for illustrative purposes only. It is not drawn to scale. Any measurements, floor areas (including any total floor area), openings and orientations are approximate. No details are guaranteed, they cannot be relied upon for any purpose and do not form any part of any agreement. No liability is taken for any error, omission or misstatement. A party must rely upon its own inspection(s). Powered by www.Propertybox.io