



GLEN COOPER POWERED BY exp TM UK

@ glen.cooper@exp.uk.com

glencooper.exp.uk.com

📞 07757 692 458

18 Belgrave Mount, College Grove

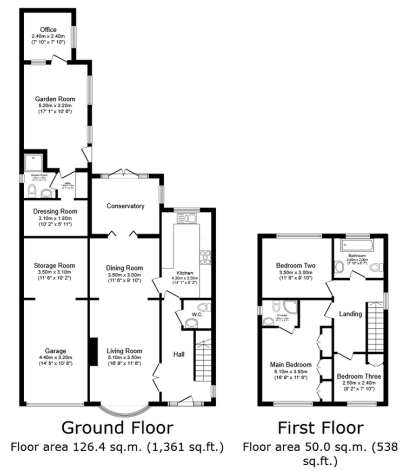
Offers In Region Of £425,000

🛏 3 🚿 3 🚿 3



Reference No GCO175 : If you have ever seen A place in the country there is the mystery house and believe you me this is that and more. It offers you spacious modern family living and entertainment space and if you enjoy having the family and friends round it's a fabulous space for entertaining guests. From the attractive frontage. you enter a fabulous family home with 3 double beds,(1 ensuite) three bathrooms, large attractive kitchen plus a spacious lounge, dining room and summer room looking out onto the spectacular enclosed courtyard garden area with a large patio ideal for sitting out and enjoying the peaceful ambiance If your a gardener then a separate large lawn and borders will blow your socks off. The real surprise with this lovely property is just off the courtyard. Here you have a large extension that could be used for so much. Guest accommodation, Play Room, Office, Party palace the potential is amazing. Get round and see how your family





Total floor area: 176.4 sq.m. (1,899 sq.ft.)

This floor plan is for illustrative purposes only. It is not drawn to scale. Any measurements, floor areas (including any total floor area), openings and orientations are approximate. No details are guaranteed, they cannot be relied upon for any purpose and do not form any part of any agreement. No liability is taken for any error, omission or misstatement. A party must rely upon its own inspection(s). Powered by www.Propertybox.io



Energy performance certificate (EPC) - Find an energy certificate - GOV.UK

0705/2025, 11:58

Energy performance certificate (EPC)		
18 Redgrave Mount WIMBORNE DT9 7 3QH	Energy rating C	Valid until: 5 May 2028 Certificate number: 2005-6205-9050-6203-6605
Property type: Detached house		
Total floor area: 150 square metres		
Rules on letting this property		
Properties can be let if they have an energy rating from A to E.		
You can read guidance for landlords on the regulations and exemptions https://www.gov.uk/guidance/landlords-exemptions-read-property-minimum-energy-efficiency-standards-landlords-guidance		

<https://find-energy-certificate.service.gov.uk/energy-certificates/2005-6205-9050-6203-6605/print.html>

Page 1 of 5

eXp World UK Ltd is a registered company at Level 37, 25 Canada Square, London, E14 5LQ.
Registered company number is 12016573. VAT Registration Number is 327 4120 29