

## Dovercourt Road, Sheffield

Offers In Region Of £200,000

4 1 1



- Unique and characterful four-bedroom end-terrace
- Generous dining room with feature fireplace
- Modern, airy kitchen with garden access
- Large, light-filled master bedroom on the top floor
- Off-street parking and excellent location near city centre and amenities
- Bright and spacious living room
- Converted Cellar/Bedroom Four
- Two first-floor bedrooms and stylish family bathroom
- Good-sized rear garden, perfect for entertaining
- Property Reference: RB0377

APPROXIMATE GROSS INTERNAL AREA = 116.4 SQ M / 1253 SQ FT  
CELLAR = 35.9 SQ M / 386 SQ FT  
TOTAL = 152.3 SQ M / 1639 SQ FT

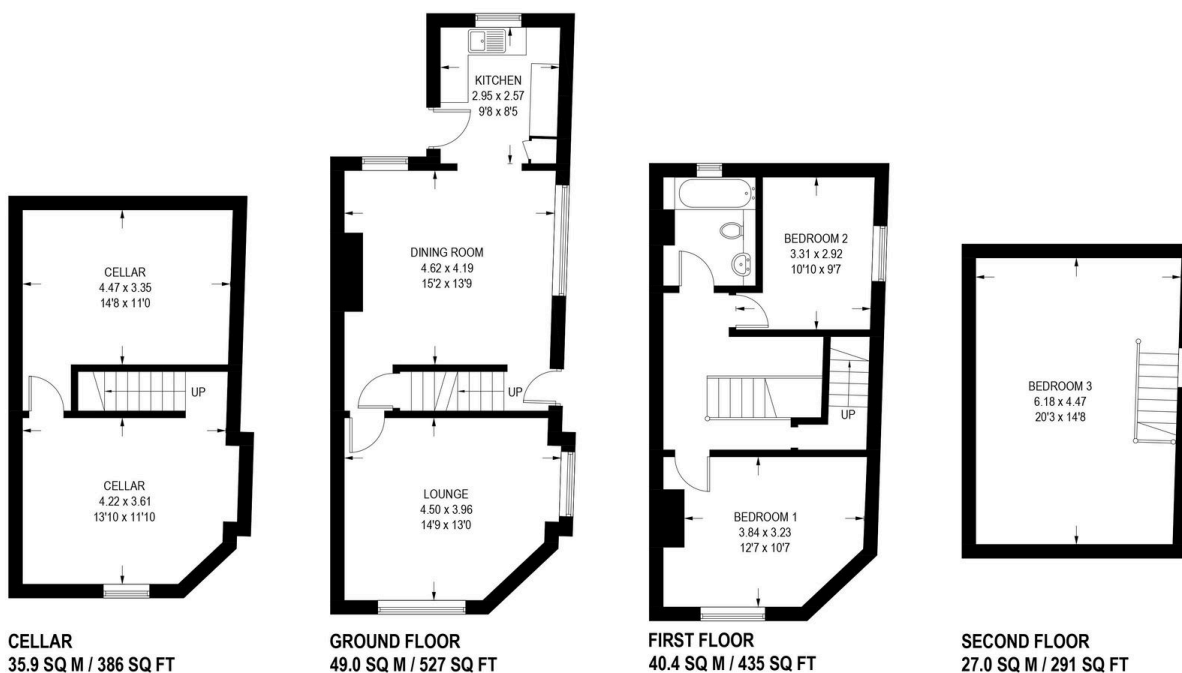


Illustration is for identification purposes only,  
measurements are approximate, not to scale.

A unique and characterful four-bedroom end-terrace house, ideally located in a popular residential area with excellent access to Sheffield city centre, strong transport links, and a wide range of local amenities.

Property Reference: RB0377