

Belmont Terrace, Thorne, Doncaster, DN8

Offers In Region Of £115,000

🛏 4 🚿 1 🚿 1



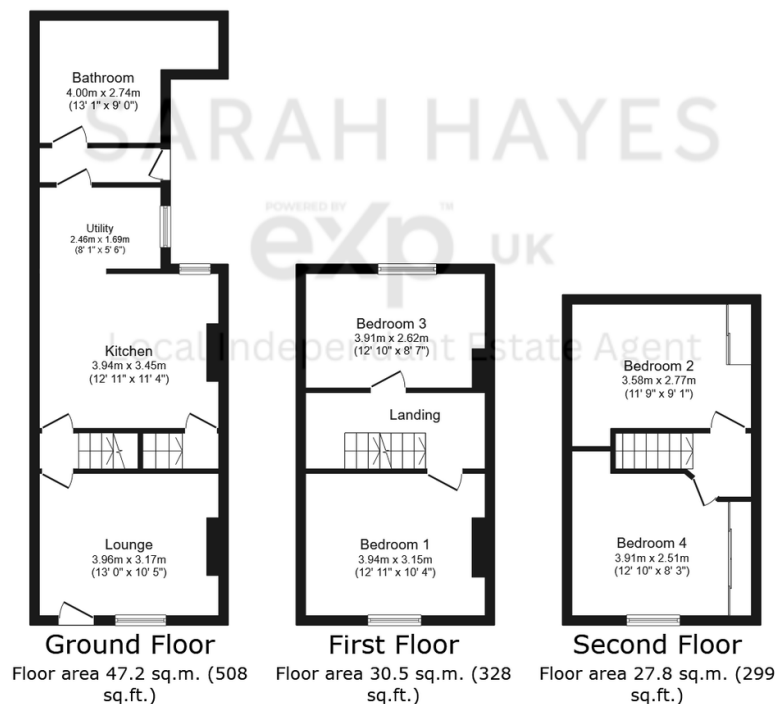
IDEAL opportunity for FIRST TIME BUYERS or INVESTOR. Spacious 4 Bedroom Mid Terrace . NO ONWARD CHAIN.

This spacious, newly refurbished 4-bedroom terraced property spread over 3 floors. The home benefits from a modern newly fitted kitchen, offering plenty of natural light, and a downstairs bathroom equipped with a fitted three piece white suite and a separate shower cubicle.

Well proportioned four bedrooms, with two bedrooms located in the attic. All rooms have been freshly decorated, including new flooring and carpets throughout, giving the property a fresh and contemporary feel.

Key Features

- IDEAL FOR FIRST TIME BUYERS / INVESTORS
- SPACIOUS FOUR BEDROOM PROPERTY OVER 3 FLOORS
- DOWNSTAIRS BATHROOM WITH A BATH & SEPARATE SHOWER CUBICLE
- ENCLOSED GARDEN WITH PAVED & LAWNED AREAS
- CLOSE TO ALL LOCAL AMENITIES AND SCHOOLS
- NO ONWARD CHAIN
- NEWLY DECORATED & NEWLY CARPETED THROUGHOUT
- BRAND NEW FITTED KITCHEN WITH BUILT IN OVEN & HOB
- EASY ACCESS TO LOCAL TRANSPORT LINKS
- TENURE FREEHOLD. EPC RATING D. COUNCIL TAX BAND A



Total floor area: 105.4 sq.m. (1,135 sq.ft.)

This floor plan is for illustrative purposes only. It is not drawn to scale. Any measurements, floor areas (including any total floor area), openings and orientations are approximate. No details are guaranteed, they cannot be relied upon for any purpose and do not form any part of any agreement. No liability is taken for any error, omission or misstatement. A party must rely upon its own inspection(s). Powered by www.Propertybox.io