

Wainwright Crescent, Sheffield

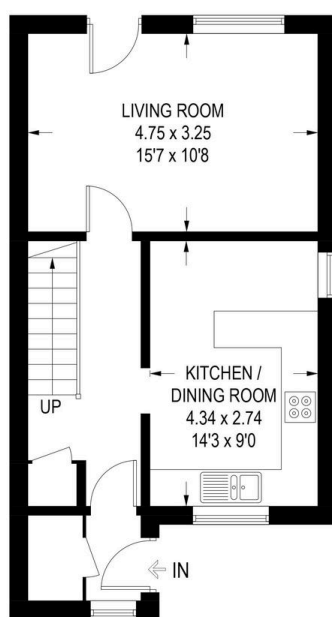
Offers Over £130,000

 3  1  1

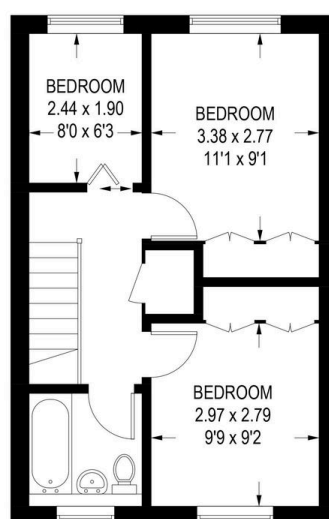


- Three-Bedroom Semi-Detached Home
- Ideal Project
- Spacious Entrance Hallway
- Bright Living Room
- Family Bathroom
- Rear Garden
- Front Garden & Driveway
- Great Location
- Viewing Advised
- Property Reference: RB0377

APPROXIMATE GROSS INTERNAL AREA
GROUND FLOOR = 39.9 SQ M / 429 SQ FT
FIRST FLOOR = 36.8 SQ M / 396 SQ FT
TOTAL = 76.7 SQ M / 825 SQ FT



GROUND FLOOR
39.9 SQ M / 429 SQ FT



FIRST FLOOR
36.8 SQ M / 396 SQ FT

Illustration is for identification purposes only,
measurements are approximate, not to scale.

This three-bedroom semi-detached home presents an excellent opportunity for those looking to modernise and add their own touch. Situated in the popular residential area of Richmond.

Property Reference: RB0377