

Sheffield Road, Killamarsh

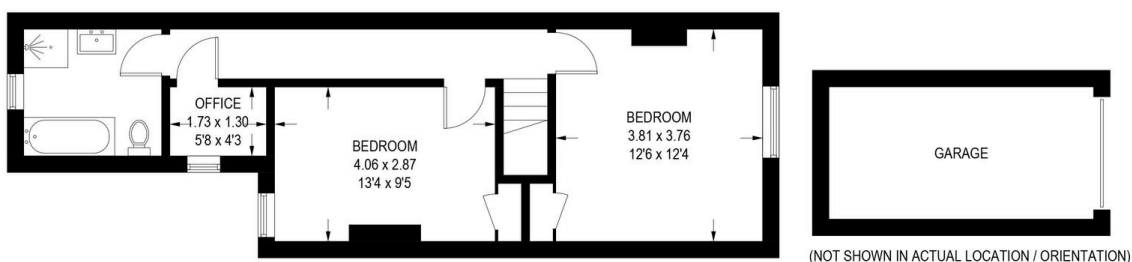
Offers In Region Of £160,000

2 1 2

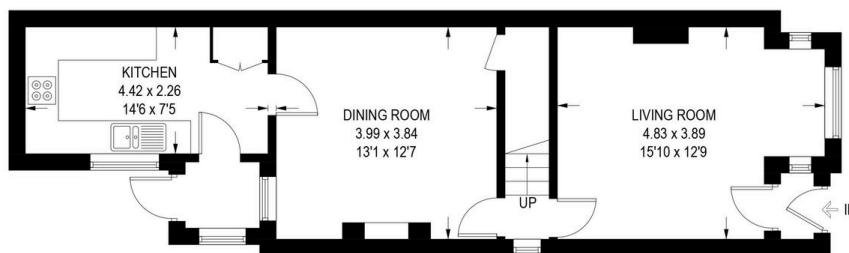


- Charming Two Bedroom Semi
- Well-Equipped Kitchen
- Spacious Living Areas
- Well-proportioned family bathroom
- Substantial rear garden
- Driveway & Garage
- Excellent Transport Links
- Great Location
- Viewing is highly recommended
- Property Reference: RB0377

APPROXIMATE GROSS INTERNAL AREA = 95.0 SQ M / 1022 SQ FT
(EXCLUDING GARAGE)



FIRST FLOOR = 44.5 SQ M / 479 SQ FT



GROUND FLOOR = 50.5 SQ M / 543 SQ FT

Illustration for identification purposes only,
measurements are approximate, not to scale.

Charming Two-Bedroom Semi-Detached home in Killamarsh.

Nestled in the heart of the village of Killamarsh, this delightful two-bedroom semi-detached home offers character, charm, and a welcoming atmosphere. Ideal for first-time buyers or those looking to downsize, the property beautifully blends period features with modern convenience.

Property Reference: RB0377

