




Deepwell Drive, Halfway

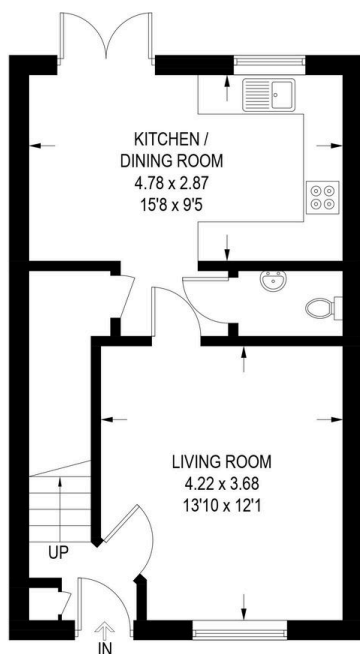
Offers In Region Of £260,000

 3  2  1

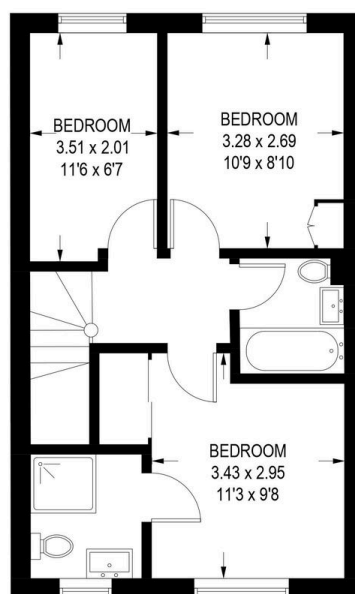


- Modern three-bedroom semi-detached home
- Fully equipped kitchen
- Three generously sized bedrooms
- Double driveway
- Convenient for local amenities
- Spacious lounge
- Convenient downstairs WC
- Master bedroom with en-suite
- Landscaped split-level rear garden
- Property Ref RB0377.

APPROXIMATE GROSS INTERNAL AREA = 80.6 SQ M / 868 SQ FT



GROUND FLOOR
40.4 SQ M / 435 SQ FT



FIRST FLOOR
40.2 SQ M / 433 SQ FT

Illustration for identification purposes only,
measurements are approximate, not to scale.

Nestled in the sought-after family-friendly area of Halfway, Sheffield, this stunning modern three-bedroom semi-detached property offers the perfect blend of contemporary living and convenient location. With thoughtfully designed interiors and a host of local amenities nearby, this home is ideal for families or professionals seeking comfort and practicality. Property ref RB0377.