

**Jubilee Place, Barton-upon-humber, DN18 5GY**

Offers Over £320,000

🛏 4 🚿 2 🚗 2



BA0665

Barton-Upon-Humber is a highly regarded and charming market town offering a range of quaint shops, pubs, coffee houses and stylish restaurants. There are three supermarkets and two petrol stations and a range of schooling for all ages, along with a range of leisure activities, open countryside and nature reserves. Well served by transport links, there is an excellent bus service and good road access to all destinations for commuters and Humberside Airport as well as a railway station in Barton.

This property occupies an enviable cul-de-sac position on this attractive development by Redrow homes. Updated by my clients, the property offers a stylish and contemporary interior with well proportioned rooms throughout and with the added benefit of a rear garden backing onto parkland.

- CLOAKROOM
- LUXURIOUSLY APPOINTED LIVE IN KITCHEN/ DINING ROOM
- MASTER BEDROOM/EN SUITE
- BATHROOM
- REAR GARDEN/ PARKLAND VIEWS
- SPACIOUS SITTING ROOM
- UTILITY ROOM
- THREE FURTHER DOUBLE BEDROOMS
- GAS CH/ DOUBLE GLAZING
- DOUBLE WIDTH DRIVEWAY/ CUL-DE-SAC LOACTION

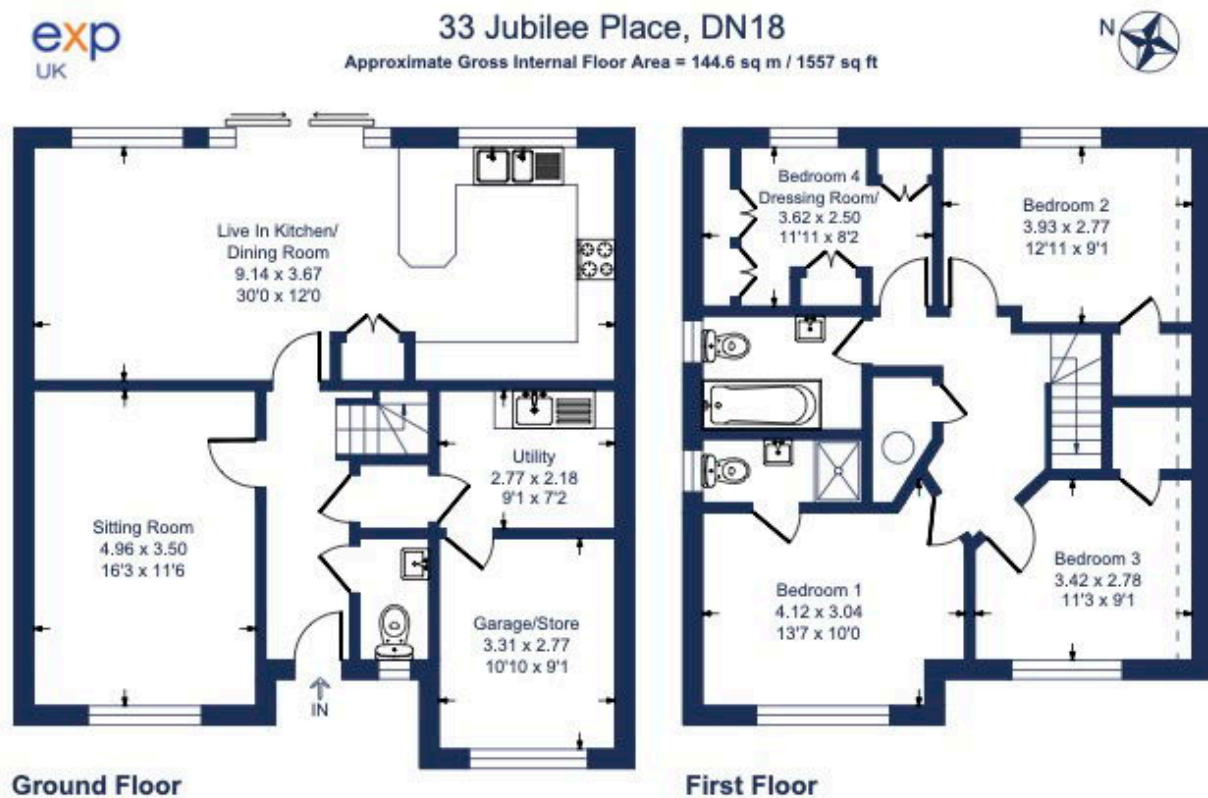


Illustration for identification purposes only, measurements are approximate, not to scale.