



ROB LETTS

exp<sup>uk</sup>



# Harton

Guide Price £400,000

4 2 1





RL0918 - Harton is a charming hamlet, nestled about nine miles from both York and Malton. It's an ideal spot for those seeking tranquillity and a peaceful way of life.

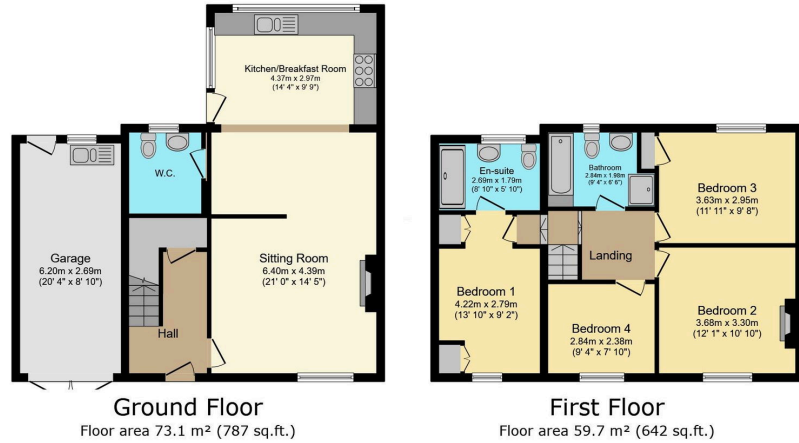
This well proportioned, EXTENDED home is situated in a prime location with stunning views over the village green.

The well proportioned accommodation briefly comprises; entrance lobby, large lounge with log burning stove, open access to a stunning kitchen diner with range style cooker and ground floor W.C. / Utility room.

To the first floor there is a family bathroom with four piece suite including bath and shower cubicle and FOUR bedrooms with the master bedroom having en-suite shower room.

Externally to the front there is a lawned garden and driveway which provides off street parking and gives access to the garage. To the rear, the West facing garden is well maintained and is predominantly laid to lawn with patio and raised decked areas. There are planted flower, tree and shrub borders with fence boundaries.

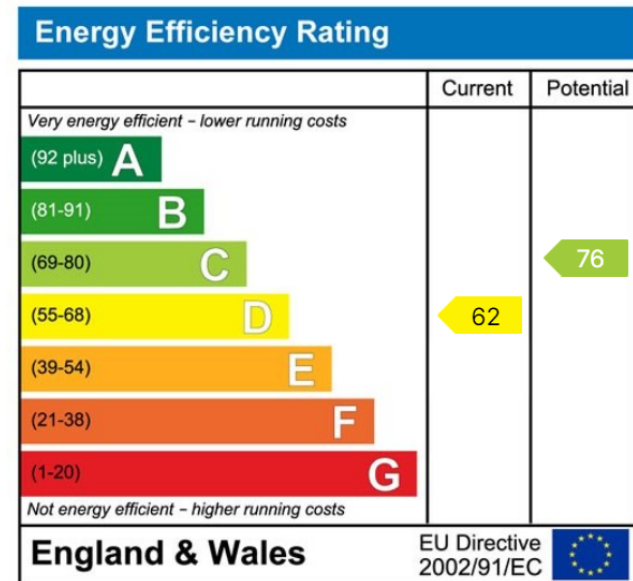




TOTAL: 132.7 m<sup>2</sup> (1,429 sq.ft.)

This floor plan is for illustrative purposes only. It is not drawn to scale. Any measurements, floor areas (including any total floor area), openings and orientations are approximate. No details are guaranteed, they cannot be relied upon for any purpose and do not form any part of any agreement. No liability is taken for any error, omission or misstatement. A party must rely upon its own inspection(s). Powered by www.propertybox.ie

- Quote RL0918 to enquire or book a viewing on this property
- FOUR Bedrooms
- Lounge With Log Burning Stove
- Ground Floor W.C. / Utility
- Off Street Parking & Garage
- Extended Family Home
- En-Suite Shower Room
- Modern Dining Kitchen With Range Style Cooker
- Family Bathroom With Shower Cubicle & Bath
- Lovely Rear Garden & Views Over The Village Green



ROB LETTS



07538 298 866



robletts.exp.uk.com



rob.letts@exp.uk.com