

Rutland Road, Burngreave

Offers Over £120,000

2 1 1



A fantastic opportunity for investors or those looking for a renovation project, this two-bedroom semi-detached home sits on a generous corner plot in a highly sought-after location. Conveniently situated close to the Northern General Hospital and benefiting from excellent transport links, this property offers great potential. Property Reference: RB0377.

- Two Bedrooms
- Dining Kitchen
- Ample Garden Space
- Close to the hospital
- Excellent Location
- Semi Detached
- Bay Window
- Corner Plot
- Great transport links
- Property Reference: RB0377

APPROXIMATE GROSS INTERNAL AREA = 61.9 SQ M / 666 SQ FT

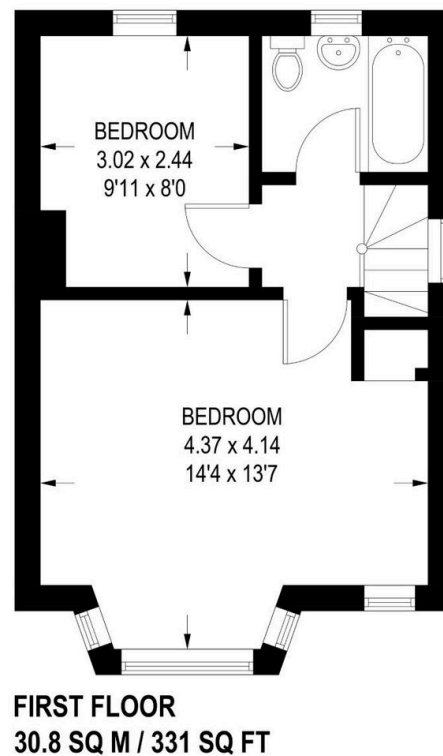
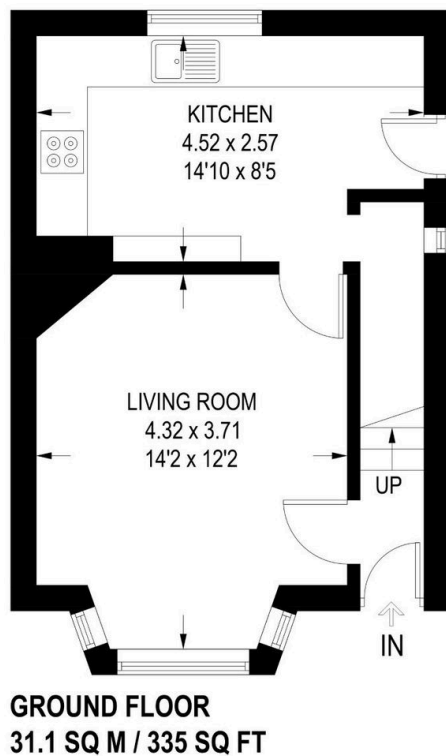


Illustration for identification purposes only,
measurements are approximate, not to scale.