

Farm View Gardens, Hackenthorpe

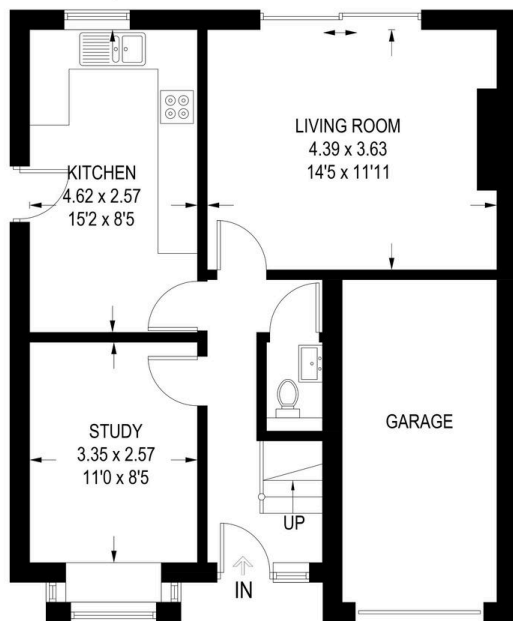
Offers In Region Of £325,000

4 2 2

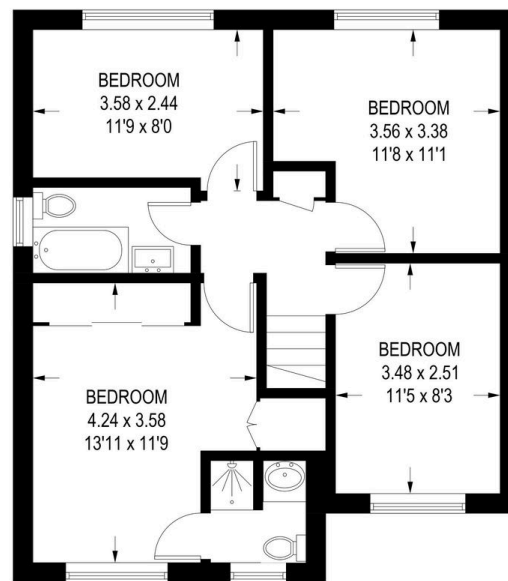


- Detached House
- Downstairs W.C.
- Good Sized Lawned Garden
- Integral Garage
- Great Location
- Four Bedrooms
- En-Suite Shower Room
- Driveway
- Excellent transport links
- Property Reference: RB0377

APPROXIMATE GROSS INTERNAL AREA = 100.7 SQ M / 1083 SQ FT
(EXCLUDING GARAGE)



GROUND FLOOR
46.3 SQ M / 498 SQ FT



FIRST FLOOR
54.4 SQ M / 585 SQ FT

Illustration for identification purposes only,
measurements are approximate, not to scale.

This spacious four-bedroom detached home, situated on a large plot in the sought-after Hackenthorpe Village, offers versatile accommodation and is perfect for families. Conveniently located just a short drive from Crystal Peaks, with easy access to Sheffield Parkway and the Supertram network, this property combines tranquillity with excellent transport links. Property Reference: RB0377