

Prince of Wales Mews, Eckington

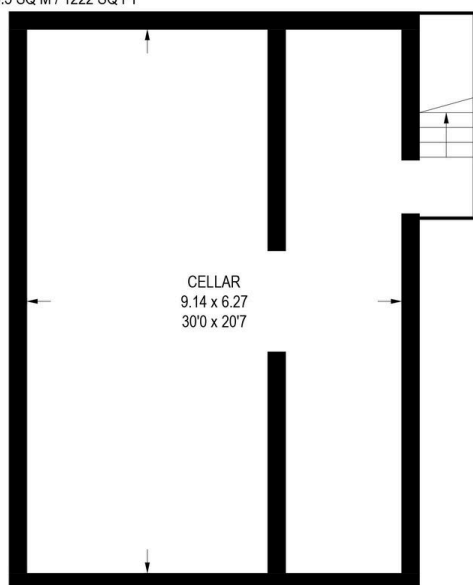
Guide Price £130,000

2 1 1

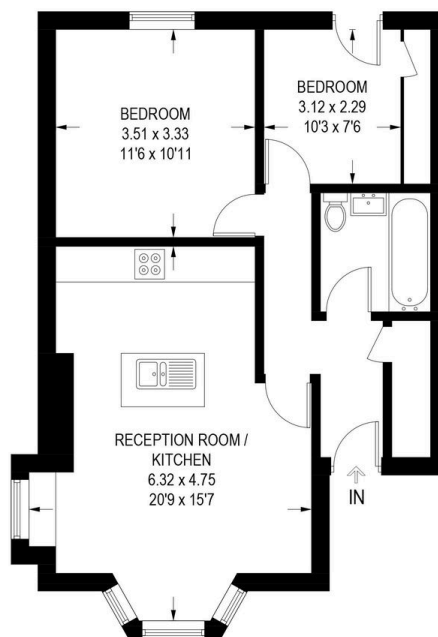


- Ground Floor Apartment
- Two Bedrooms
- Modern Kitchen
- Character Features
- Cellar with potential for conversion
- Allocated Parking
- Great Location
- Good transport links
- Viewing Advised
- Property Reference RB0377

APPROXIMATE GROSS INTERNAL AREA = 55.9 SQ M / 602 SQ FT
CELLAR = 57.6 SQ M / 620 SQ FT
TOTAL = 113.5 SQ M / 1222 SQ FT



CELLAR
57.6 SQ M / 620 SQ FT



GROUND FLOOR
55.9 SQ M / 602 SQ FT

Illustration for identification purposes only,
measurements are approximate, not to scale.

GUIDE PRICE £130,00-£140,000. A stunning and characterful two-bedroom ground floor apartment, offering an ideal blend of modern living and period charm. This beautifully presented home boasts an open-plan living area with a contemporary kitchen, a spacious master bedroom, and a well-appointed family bathroom. Additionally, the property benefits from a cellar, perfect for extra storage or conversion potential, along with two allocated parking spaces. Property reference RB0377.