

## The Common, Crich, Matlock

Offers In Region Of £325,000

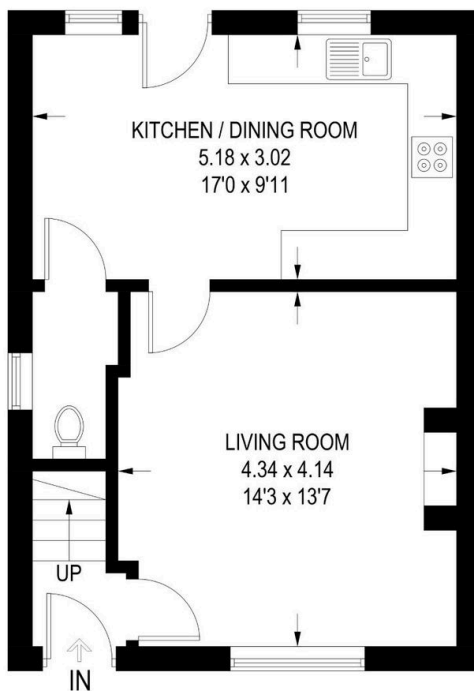
🛏 2 🚿 1 🚗 1



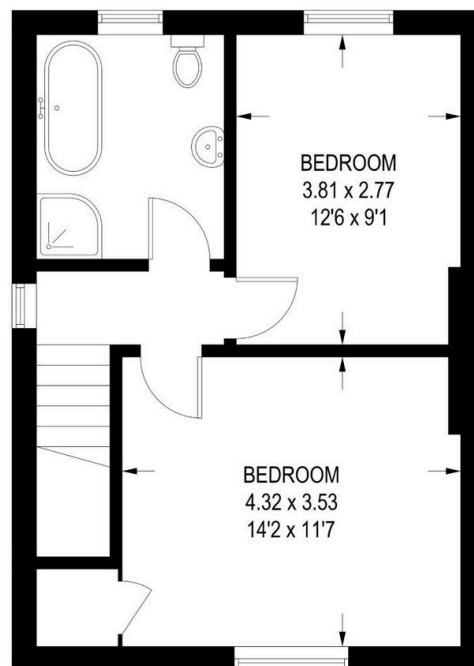
A beautiful two-bedroom detached property located in the highly sought-after village of Crich, offering immense potential with planning permission granted to extend into a spacious four-bedroom family home. This charming residence benefits from NO UPWARD CHAIN and is ideal for those seeking a project with plenty of scope for enhancement. Property Reference RB0377

- No Upward Chain
- Two Bedrooms
- Downstairs W.C.
- Generous Garden with decking
- Viewing advised
- Detached
- Planning permission to extend to Four Bedrooms
- Kitchen/Diner
- Driveway
- Property Reference RB0377

APPROXIMATE GROSS INTERNAL AREA = 78.3 SQ M / 843 SQ FT



**GROUND FLOOR**  
39.3 SQ M / 423 SQ FT



**FIRST FLOOR**  
39.0 SQ M / 420 SQ FT

Illustration for identification purposes only,  
measurements are approximate, not to scale.