

Plumbley Lane, Mosborough

Guide Price £450,000 - £475,000

🛏 4 🚿 1 🚗 2



- Semi detached farmhouse
- Substantial garden
- Incredible views
- Chain free
- Useful utility
- Four bedrooms
- Rooftop balcony
- Semi rural location
- Impressive dining kitchen
- Property ref RB0377

APPROXIMATE GROSS INTERNAL AREA = 142 SQ M / 1528 SQ FT
(EXCLUDING GARAGE)

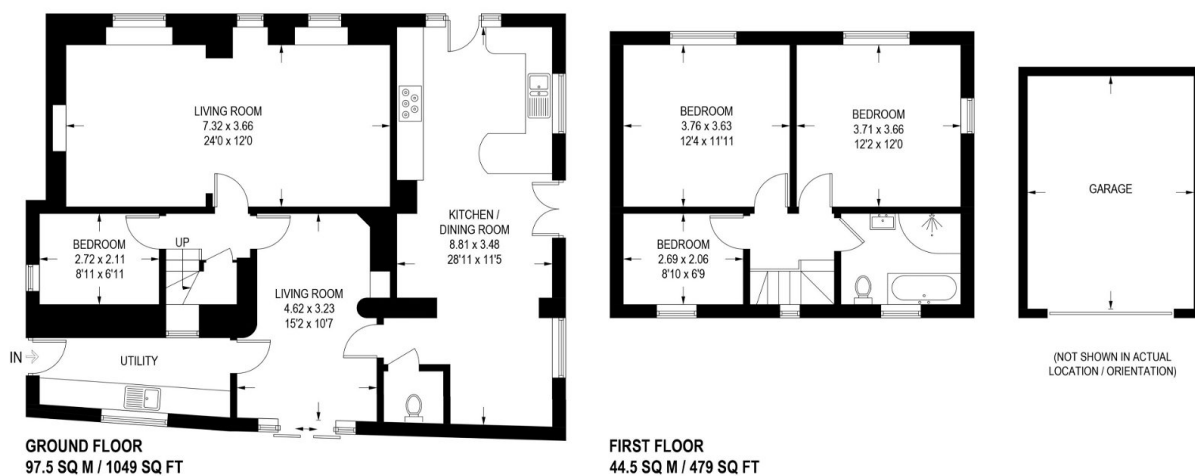


Illustration for identification purposes only,
measurements are approximate, not to scale.

Guide Price £450,000 - £475,000. This stunning four-bedroom farmhouse, located in the sought-after village of Mosborough, boasts a sun terrace balcony, beautiful views, and original features. With spacious living areas, a modern kitchen, and ample outdoor space including a rooftop balcony, this property offers a perfect blend of charm and comfort. Conveniently situated close to local amenities and excellent schools. Property ref RB0377.