

Alfreton Road, Westhouses

Guide Price £775,000 - £800,000

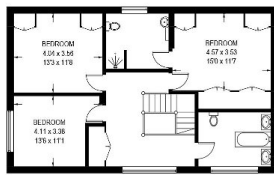
3 2 4



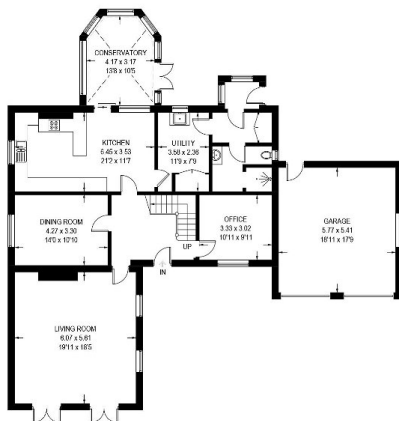
- Three bedroom detached with potential to extend
- Secluded position
- Menage
- Double garage and ample parking
- Ideal location for commuting
- 4.1 Acres (stm)
- Six stables
- Covered storage barn
- Chain Free
- Property ref RB0377

WEST LEA HOUSE

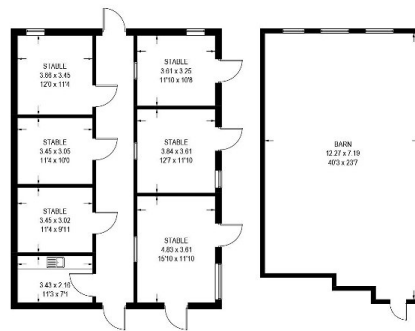
APPROXIMATE GROSS INTERNAL AREA = 217.4 SQ M / 2340 SQ FT
 GARAGE = 31.2 SQ M / 336 SQ FT
 OUTBUILDINGS = 196.1 SQ M / 2110 SQ FT
 TOTAL = 444.7 SQ M / 4786 SQ FT



FIRST FLOOR
83.5 SQ M / 899 SQ FT



GROUND FLOOR
133.9 SQ M / 1441 SQ FT
(EXCLUDING GARAGE)



STABLES
112.9 SQ M / 1215 SQ FT

BARN
83.2 SQ M / 895 SQ FT

Illustration for identification purposes only, measurements are approximate, not to scale.

Guide Price £775,000 - £800,000. No Chain! West Lea House is a stunning detached equestrian property offering a secluded feel and convenient access to Derby, Matlock, Chesterfield, and Mansfield. This Three-bedroom home features large reception rooms, six stables, a tack room, a menage, and approximately 4.1 acres of grounds with beautiful countryside views. Property Ref RB0377.