



HOLLY PRICE POWERED BY **exp** TM UK

@ holly.price@exp.uk.com

🌐 hollyprice.exp.uk.com

☎ 01904 373131

7 Championsgate, North Duffield

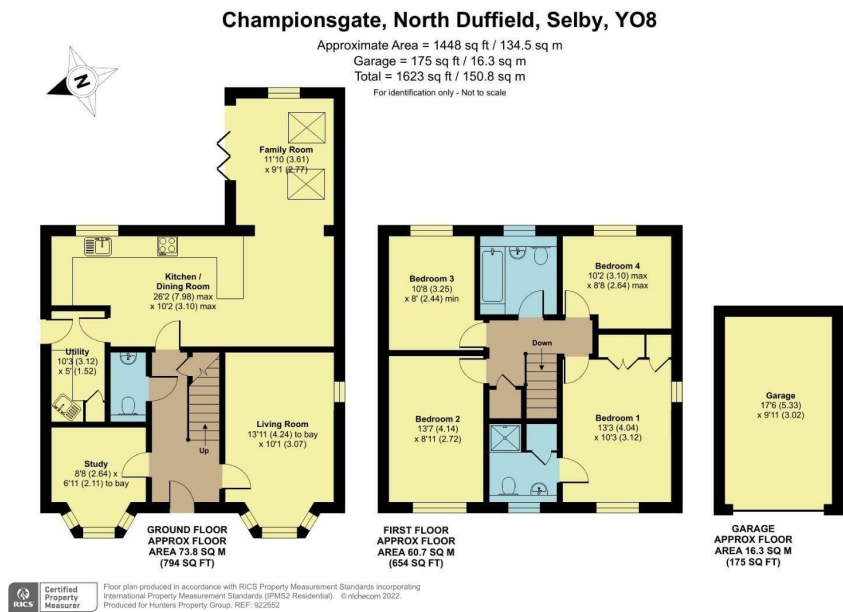
Offers Over £475,000

4 2 1



- Please quote HP0386 when requesting further information or to arrange a viewing
- Open Plan Kitchen/Dining/Family Room
- Master Bedroom With En-Suite
- Individually Designed Double Fronted Property
- Popular North Duffield Village Location
- 4 Bedroom Detached Family Home
- Single Detached Garage
- Rear Garden With Open Field Views To The Rear
- Quiet Exclusive Cul-De-Sac





Set in a quiet, exclusive cul-de-sac on the outskirts of North Duffield, is this beautiful double fronted detached family home, with modern open plan L shape kitchen diner, field views from the rear garden and ample driveway parking for multiple vehicles. This lovely home comes with a double garage, and is 'move in ready'. Welcome to Championsgate.

Score	Energy rating	Current	Potential
92+	A		
81-91	B		
69-80	C		76 C
55-68	D	64 D	
39-54	E		
21-38	F		
1-20	G		

eXp World UK Ltd is a registered company at Level 37, 25 Canada Square, London, E14 5LQ.

Registered company number is 12016573. VAT Registration Number is 327 4120 29