

Hartington Road, Spital

Guide Price £170,000 - £180,000

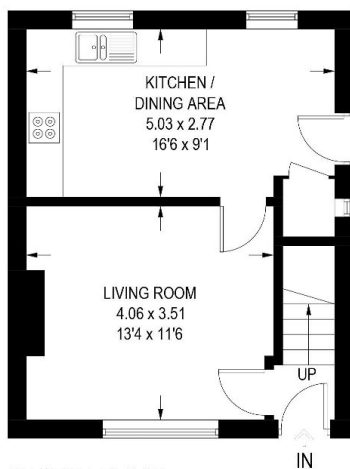
3 1 1



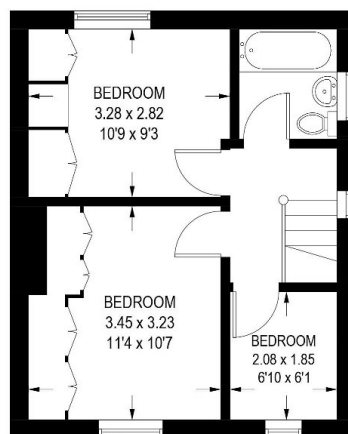
- End Terrace
- Gated Driveway
- Ideal for first time buyers
- Modern throughout
- Viewing advised
- Three bedroom
- Generous, walled garden
- Chain free
- Convenient location
- Property Ref RB0377

48 HARTINGTON ROAD

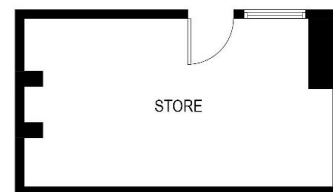
APPROXIMATE GROSS INTERNAL AREA = 64.9 SQ M / 699 SQ FT
(EXCLUDING STORE)



GROUND FLOOR
32.6 SQ M / 351 SQ FT



FIRST FLOOR
32.3 SQ M / 348 SQ FT



LOWER GROUND FLOOR

Illustration for identification purposes only,
measurements are approximate, not to scale.

Guide Price £170,000 - £180,000. Situated in a prime location this charming end terrace home is perfect for families, professionals, or anyone looking for a comfortable and well-located residence. Don't miss the opportunity to make this lovely property your new home. Property Ref RB0377.