




Over Road, Baslow

Offers In Region Of £925,000

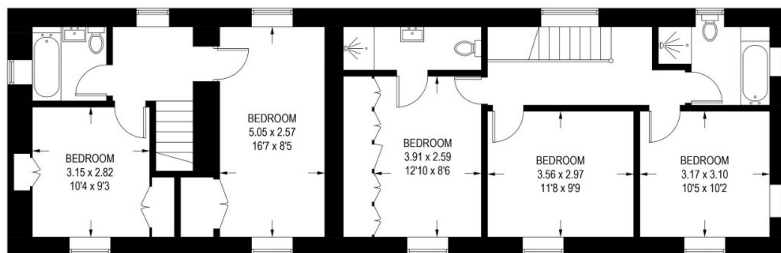
 5  3  2



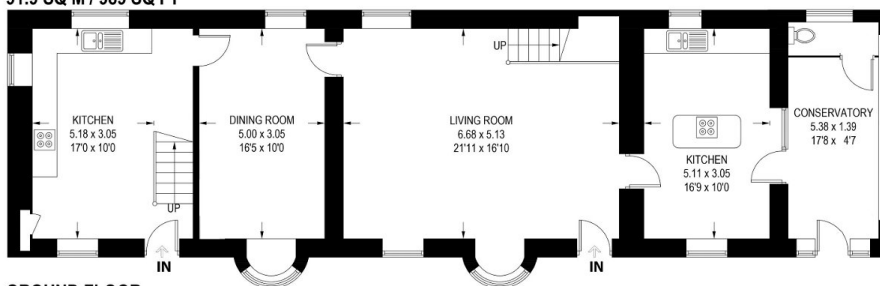
- Five bedroom stone built detached
- Two driveway's
- Generous front garden
- Lady Manners catchment
- Chain Free
- Annexe potential
- Garage
- Sought after village location
- Convenient access to Bakewell, Sheffield & Chesterfield
- Property Ref RB0377

MOORSTONE COTTAGE

APPROXIMATE GROSS INTERNAL AREA = 203.0 SQ M / 2282 SQ FT
 GARAGE = 22.3 SQ M / 240 SQ FT
 TOTAL = 225.3 SQ M / 2522 SQ FT (EXCLUDING STORE)



FIRST FLOOR
 91.9 SQ M / 989 SQ FT



GROUND FLOOR
 111.1 SQ M / 1293 SQ FT

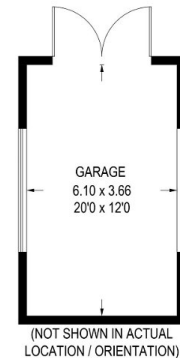


Illustration for identification purposes only, measurements are approximate, not to scale.

Thought to originate from the early 19th Century, this substantial detached five-bedroom residence is Ideal for a family seeking ample living space or those with dependent relatives keen on separate accommodation, this property warrants a viewing to fully appreciate its generous dimensions. Property Ref RB0377.