
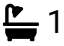



## Church View, Barlborough

Guide Price £140,000 - £150,000

 2  1  1



- Semi detached
- Modern bathroom
- Generous Garden
- Huge potential
- No chain
- Two double bedrooms
- Downstairs WC
- In need of modernisation
- Driveway
- Property Ref RB0377.

### 13 CHURCH VIEW

APPROXIMATE GROSS INTERNAL AREA = 75.2 SQ M / 809 SQ FT

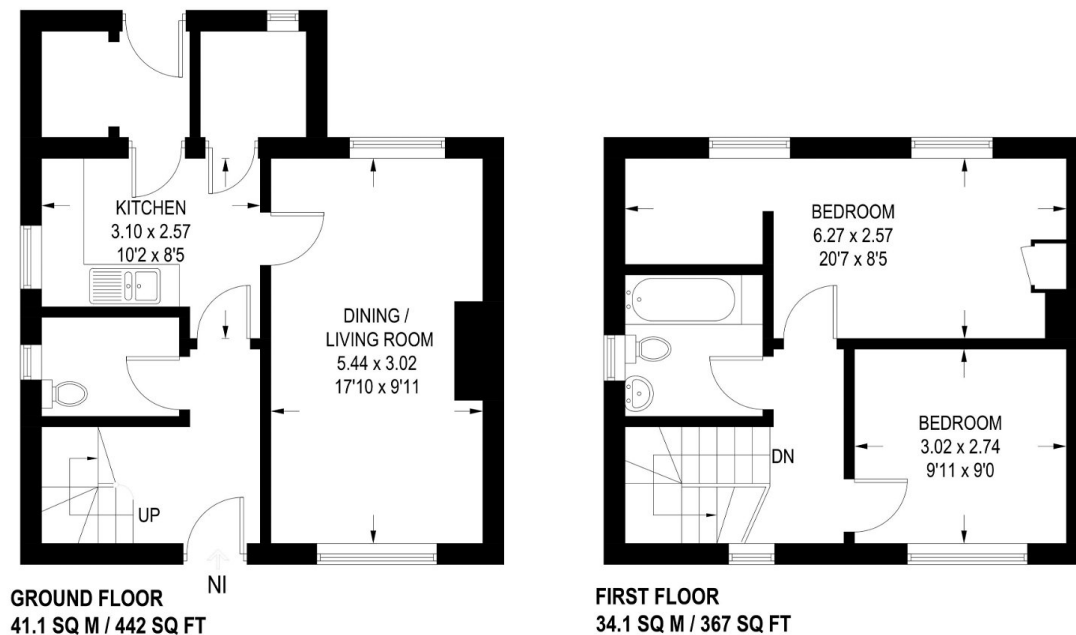


Illustration for identification purposes only, measurements are approximate, not to scale.

Guide price £140,000 - £150,000. Nestled within the inviting community of Barlborough, this two-bedroom semi-detached property offers a wonderful opportunity for those seeking a home brimming with potential. With its prime location near the M1 motorway, commuting becomes effortless Property ref RB0377.