



Springfield Crescent, Solihull, B92 9AE
Marketed by Tom Cooper powered by eXp



Description

Welcome to Springfield Crescent – a beautifully presented three-bedroom family home tucked away in a popular and convenient part of Elmdon, Solihull.

From the moment you arrive, you'll notice the newly laid block-paved driveway offering space for two cars with wall mounted electric car charger leading up to an enclosed entrance porch and a welcoming hallway that sets the tone for the rest of the home.

The ground floor features a lovely through lounge and dining room, with a bay window at the front bringing in plenty of natural light. It's a great space for relaxing or entertaining. To the rear, the extended kitchen provides the perfect hub for family life, with integrated appliances and plenty of room to cook, eat and enjoy time together. Just off the kitchen is a useful utility room with the boiler neatly housed on the wall.

Upstairs, there are three well-proportioned bedrooms – two generous doubles and a third single that would make a great child's room, home office or nursery. The master bedroom includes built-in wardrobes, and the family bathroom is stylishly finished with a modern suite, including a bath and shower over. Additional storage space can be found in the loft which is boarded.

Outside, the rear garden has been thoughtfully landscaped to make the most of the space. There's a patio area for outdoor dining, a neat lawn, a path leading to a charming cooking area complete with pizza oven – perfect for summer evenings – and a handy shed for storage.

A fantastic opportunity to move into a ready-made family home in a great location.

Additional information

Tenure: Freehold

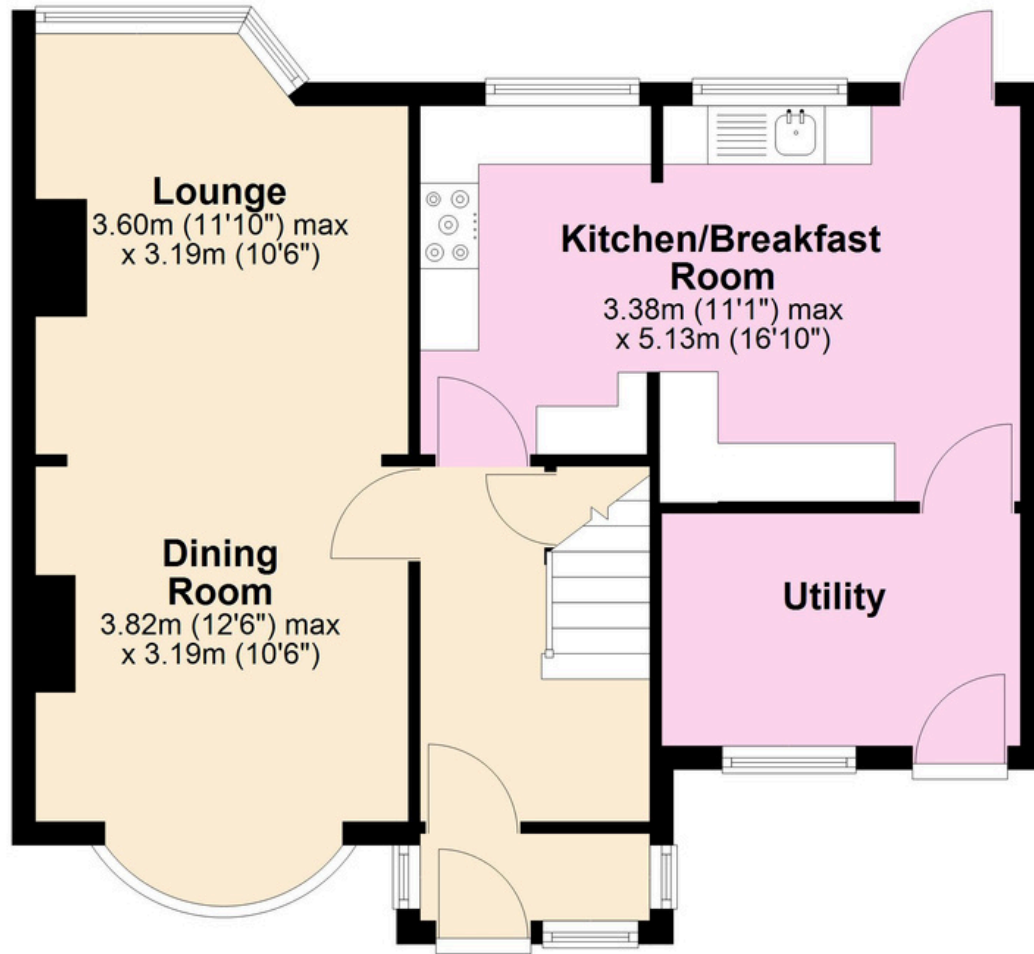
Sellers onwards position: Onwards chain to be agreed

EPC Rating: C

Council Tax Band: C

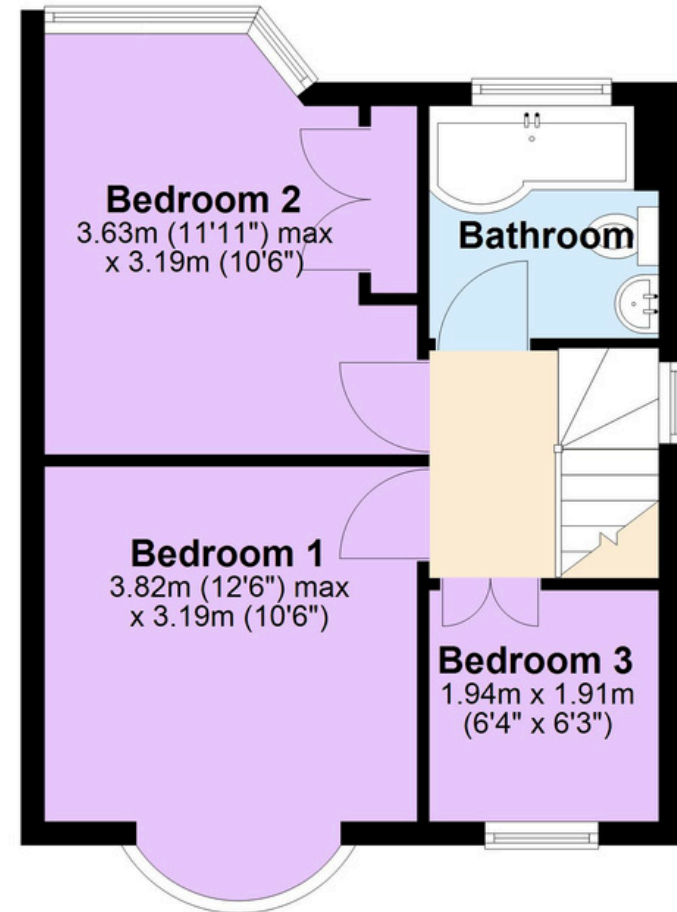
Ground Floor

Approx. 52.7 sq. metres (567.2 sq. feet)



First Floor

Approx. 33.5 sq. metres (360.4 sq. feet)



Total area: approx. 86.2 sq. metres (927.6 sq. feet)





Why sell with Tom?

As an experienced estate agent covering Solihull, Birmingham, and Warwickshire, I take pride in delivering a fresh and innovative approach to buying and selling properties. With **over 10 years of experience**, I've built a bespoke agency that prioritizes a personal and modern service designed to make your property journey seamless and **stress-free**. Communication is key, which is why I offer a direct line for my clients to call, text, or WhatsApp me anytime with a guaranteed response. My services are available **seven days a week**, including evenings, ensuring you can reach me at a time that suits you. I operate on a **no sale, no fee** basis with no upfront commission or lengthy tie-in periods, giving you peace of mind and flexibility. I offer **professional photography**, detailed floor plans, and engaging video tours, all tailored to showcase your home at its best. Unlike traditional agencies, I don't believe in tying clients into long contracts. Instead, I focus on delivering results and providing a service that speaks for itself. Let me show you how selling your home should be done.

Get in touch to experience a modern, **hassle-free** way of moving.

TOM COOPER

POWERED BY
exp [®] UK

