

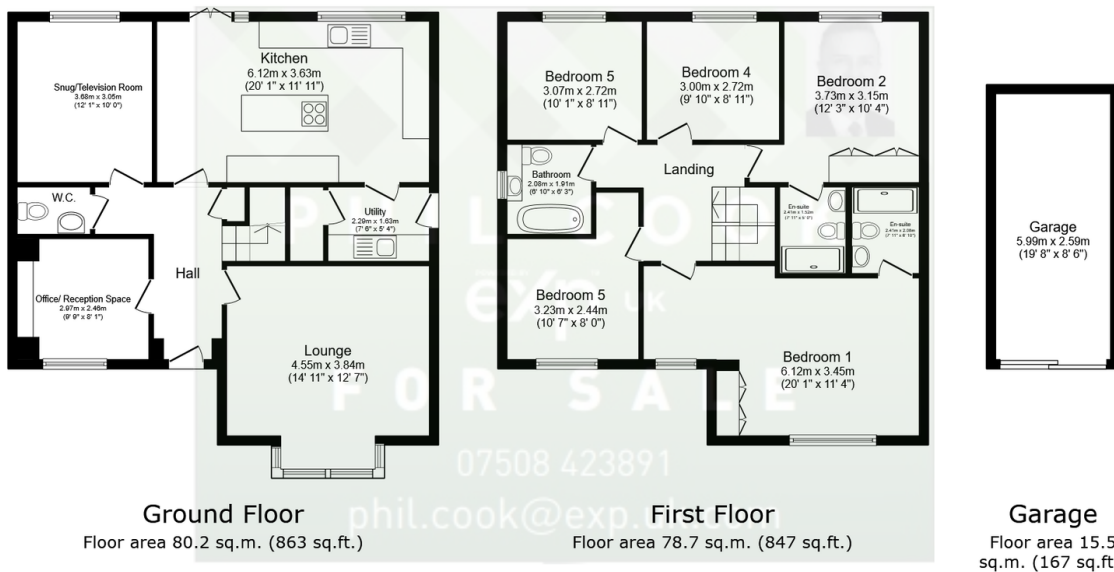
6 Crosbie Grove,

Guide Price £525,000

5 3 3



- Please Quote PC0649
- Superb Modern Five Bedroom Family Home
- Large Lounge, Study and Further
- Five Double Bedrooms
- Lovely Woodland Views to the Front
- Hit the 'Request Details' or 'Email Agent' button to secure your viewing now!
- Excellent Silverwoods Location to the Worcester Side of Kidderminster
- Exceptional High Specification Refitted Kitchen
- Driveway and Detached Garage
- Agent : Phil Cook



Total floor area: 174.4 sq.m. (1,878 sq.ft.)

This floor plan is for illustrative purposes only. It is not drawn to scale. Any measurements, floor areas (including any total floor area), openings and orientations are approximate. No details are guaranteed, they cannot be relied upon for any purpose and do not form any part of any agreement. No liability is taken for any error, omission or misstatement. A party must rely upon its own inspection(s). Powered by www.Propertybox.io

Quote Reference PC0649. Hit the 'Request Details' or 'Email Agent' button to secure your viewing now! Modern five bedroom detached family home with garage and driveway, two en-suite shower rooms and a family bathroom. Comprising entrance hallway, lounge, study/reception room, dining room, downstairs cloakroom, stunning refitted dining kitchen, utility room, five bedrooms, two en-suites and family bathroom. Situated on a private cul de sac of just two properties, on the Stour Valley, Silverwoods development to the Worcester side of Kidderminster

PHIL COOK



@ phil.cook@exp.uk.com

philcook.exp.uk.com

07508 423 891

and having many local amenities on the doorstep. The property also benefits from having gas central heating, double glazing, detached garage and off road parking. Hit the 'Request Details' or 'Email Agent' button to secure your viewing now!