

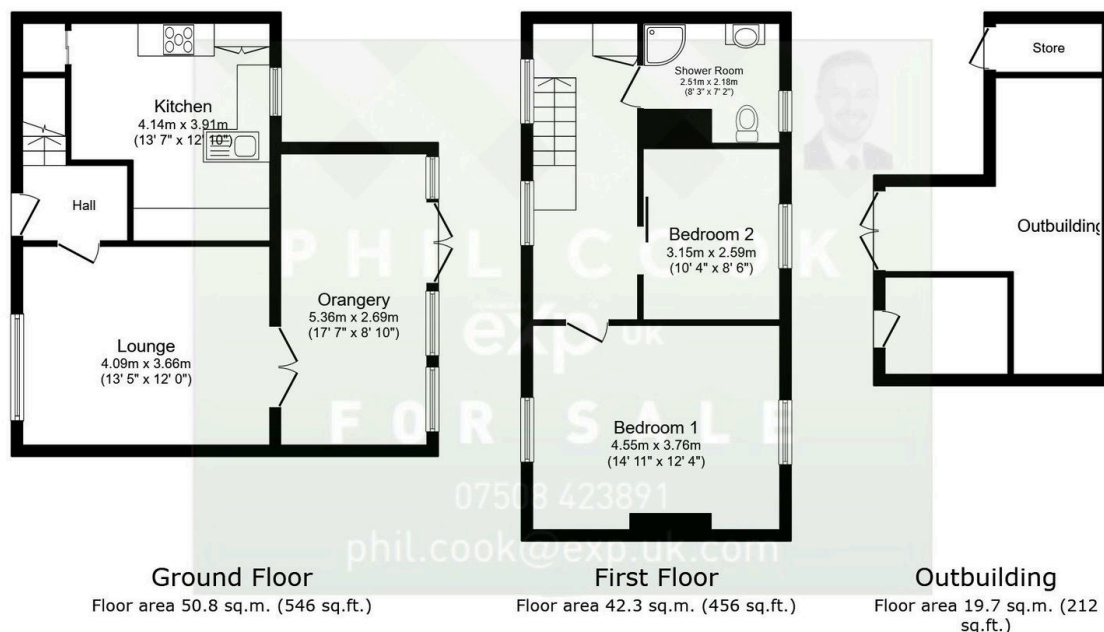
Steeple Cottage, Childe Road, Cleobury Mortimer

Guide Price £280,000

🛏 2 🚿 1 🚗 2



- Quote Reference PC0649. Click 'CONTACT' to book a viewing now.
- Very Well Presented
- Lounge, Dining Kitchen and Orangery Extension
- Rear Courtyard Garden with Excellent Outbuildings
- Early Viewing Advised
- Two Bedroomed Semi-Detached Cottage Located in a Popular Village Location.
- Two Double Bedrooms
- Excellent Downstairs Space
- Quiet and Convenient Location
- Hit the 'Request Details' or 'Email Agent' button to secure your viewing now!



Total floor area: 112.8 sq.m. (1,215 sq.ft.)

This floor plan is for illustrative purposes only. It is not drawn to scale. Any measurements, floor areas (including any total floor area), openings and orientations are approximate. No details are guaranteed, they cannot be relied upon for any purpose and do not form any part of any agreement. No liability is taken for any error, omission or misstatement. A party must rely upon its own inspection(s). Powered by www.Propertybox.io

Quote Reference PC0649. Hit the 'Request Details' or 'Email Agent' button to secure your viewing now! A very well presented semi-detached cottage much improved by the present owners in the village of Cleobury Mortimer with a wealth of incredible original features. Consisting of a large lounge room, pleasant cottage style dining kitchen, beautiful recently added Orangery extension. The first floor consists of two double bedrooms and a family shower room. The rear courtyard garden has raised planting beds and patio seating excellent outbuilding/workshop and sheds/

PHIL COOK



@ phil.cook@exp.uk.com

philcook.exp.uk.com

07508 423 891

stores. LPG gas central heating. A lovely cottage home in this sought after village location with excellent local amenities and transport links nearby. Hit the 'Request Details' or 'Email Agent' button to secure your viewing now!