

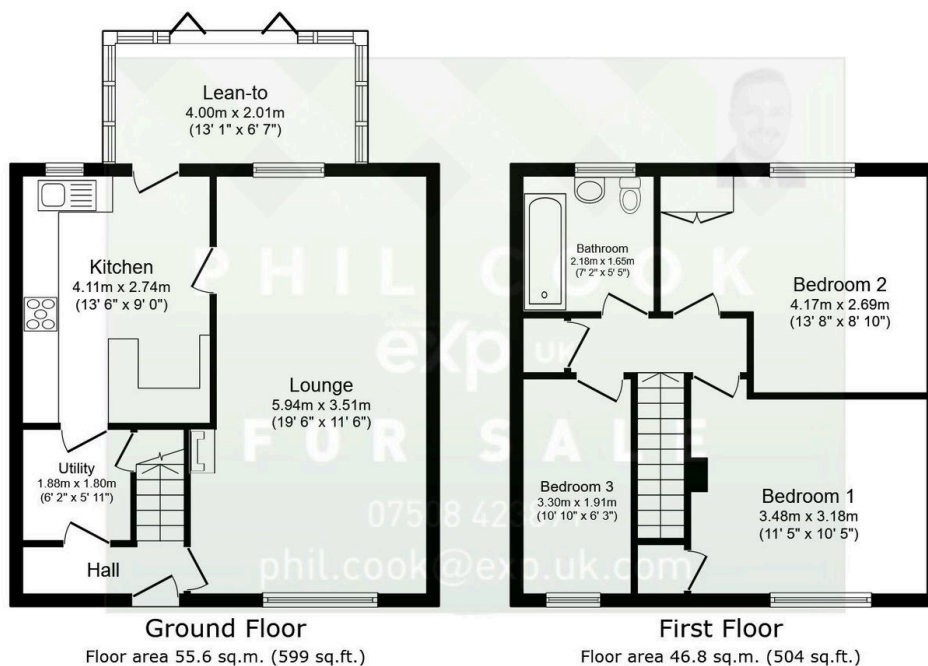
71 Canterbury Road, Habberley, Kidderminster

Guide Price £190,000

3 1 2



- Quote Reference PC0649
- Convenient Location, Bewdley Side of Kidderminster
- Excellent Rear Extension/Lean-to
- Driveway Parking
- Early Viewing Advised
- Three Bedroom Terraced Family Property
- Kitchen, Lounge/Diner, Utility Room
- Low Maintenance Rear Garden
- Close to all Local Amenities
- Hit the 'Request Details' or 'Email Agent' button to secure your viewing now!



Total floor area: 102.4 sq.m. (1,103 sq.ft.)

This floor plan is for illustrative purposes only. It is not drawn to scale. Any measurements, floor areas (including any total floor area), openings and orientations are approximate. No details are guaranteed, they cannot be relied upon for any purpose and do not form any part of any agreement. No liability is taken for any error, omission or misstatement. A party must rely upon its own inspection(s). Powered by www.Propertybox.io