

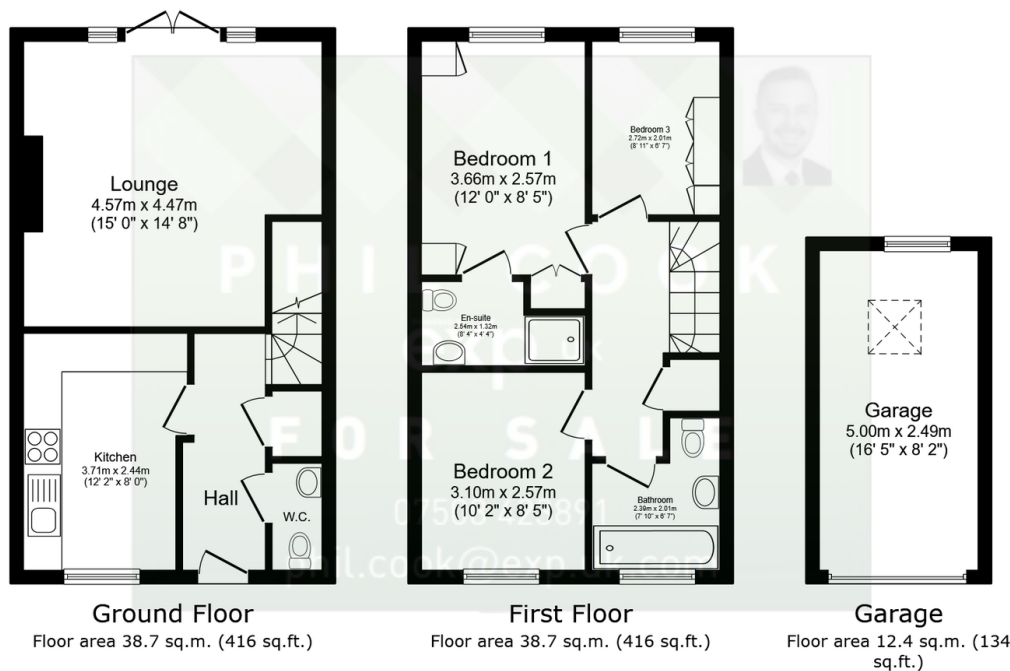
2 Westcott Road, Kidderminster

Guide Price £250,000

3 2 1



- Quote Reference PC0649
- Convenient Location Near to Crossley Retail Park
- Exceptional Upgrades
- Driveway Parking to the Side with Garage, Further Allocated Parking
- Early Viewing Advised
- Three Bedroom Terraced Modern Property
- Refitted High Quality Kitchen, Lounge, Ensuite
- Superb Landscaped Front and Rear Garden
- Close to all Local Amenities
- Hit the 'Request Details' or 'Email Agent' button to secure your viewing now!



Total floor area: 89.8 sq.m. (966 sq.ft.)

This floor plan is for illustrative purposes only. It is not drawn to scale. Any measurements, floor areas (including any total floor area), openings and orientations are approximate. No details are guaranteed, they cannot be relied upon for any purpose and do not form any part of any agreement. No liability is taken for any error, omission or misstatement. A party must rely upon its own inspection(s). Powered by www.Propertybox.io

Quote Reference PC0649. Hit the 'Request Details' or 'Email Agent' button to secure your viewing now! Exceptional, mid-terraced, modern family home of very high specification with three good size bedrooms, family bathroom and en-suite shower room, driveway and a garage to the side, further allocated parking to the rear of the property, re-fitted high quality kitchen, and large lounge, double glazed and central heating, private landscaped front and rear garden with rear access gate to the rear parking. Close To canal side walks, town centre and all local amenities. Kidderminster is a large town in the parish of Wyre Forest and is a short distance away from the

PHIL COOK



@ phil.cook@exp.uk.com

philcook.exp.uk.com

07508 423 891

busy cities of Worcestershire and Birmingham and has an excellent network of transport links to the motorway and of course our own Kidderminster train station. Hit the 'Request Details' or 'Email Agent' button to secure your viewing now!