



TONI HAUGHIAN

exp[®] UK

@ toni.haughian@exp.uk.com

🌐 tonihaughian.exp.uk.com

📞 01926 754046

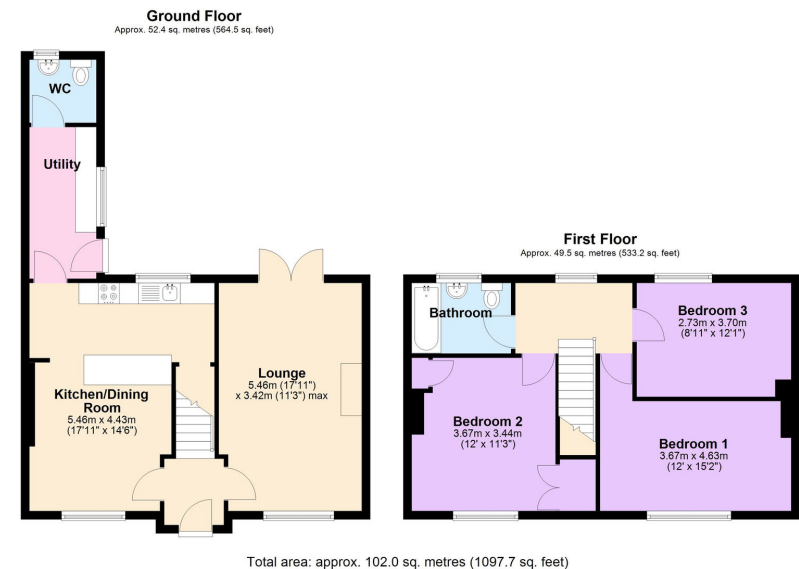
8 Queens Avenue,
Guide Price £300,000

3 1 1



- Popular Market Town
- Secure back garden
- Utility room
- Close to town centre
- 3 spacious bedrooms
- Downstairs WC
- Open plan kitchen/dining room
- Off road parking





Ref:TH0561

Charming Family Home with Garden & Parking in Shipston-on-Stour

A well-proportioned three-bedroom terraced home located in the popular market town of Shipston-on-Stour, close to local amenities and within easy reach of Stratford-upon-Avon and the Cotswolds. The property features an entrance hall, dual-aspect sitting room with open fire and patio doors to the rear garden, and an open-plan dining kitchen. Additional ground floor spaces include a utility room and cloakroom.

Upstairs offers three bedrooms and a family bathroom. Outside, the property benefits from off-road parking, a front garden, and a generous rear garden with patio and lawned areas.

Energy rating and score

This property's energy rating is D. It has the potential to be C.

[See how to improve this property's energy efficiency.](#)

