




3 Rowan Close, Guide Price £435,000

 3  2  2



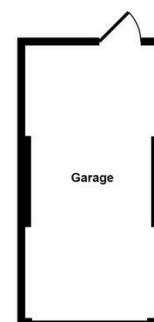
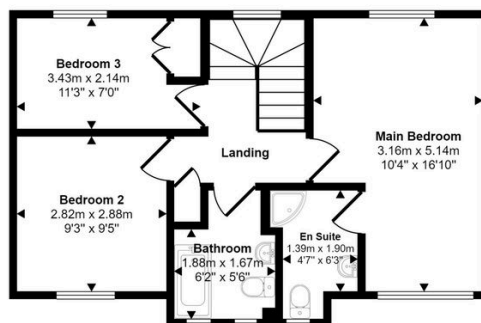
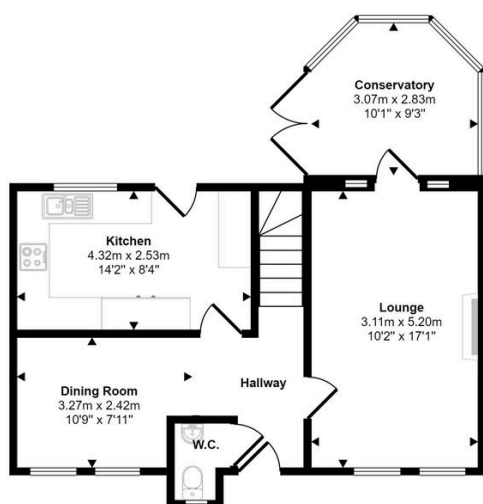
REF: CS1106

Welcome to Rowan Close, a beautifully presented three-bedroom detached home, ideally positioned within a quiet and highly sought-after cul-de-sac in Walmley. 3 Rowan Close offers the perfect balance of modern living, stylish interiors, and a peaceful setting – an ideal proposition for families, professionals, or those looking to upsize into a turnkey home in a well-connected location.

Key Features

- REF: CS1106
- Quiet cul-de-sac location in the heart of Walmley
- Contemporary kitchen and dining area
- Three well-proportioned bedrooms, including fitted wardrobes to the principal
- Private driveway and detached garage
- Beautifully presented three-bedroom detached home
- Spacious and light-filled living room with neutral décor
- Well-maintained private rear garden with patio and lawn
- Modern family bathroom
- Excellent transport links to Sutton Coldfield & Birmingham

Approx Gross Internal Area
113 sq m / 1214 sq ft



This floorplan is only for illustrative purposes and is not to scale. Measurements of rooms, doors, windows, and any items are approximate and no responsibility is taken for any error, omission or mis-statement. Icons of items such as bathroom suites are representations only and may not look like the real items. Made with Made Snappy 360.