

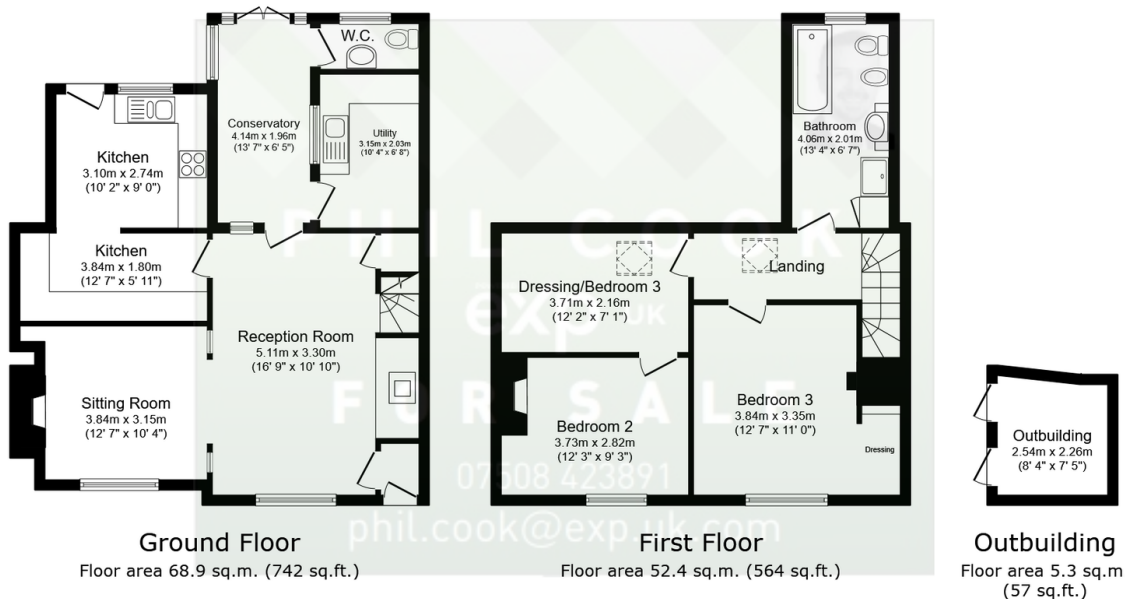
68 High Street, Cleobury Mortimer

Guide Price £220,000

3 1 3



- Quote Reference PC0649
- Convenient Location in Cleobury Mortimer
- Exceptional Period Features and Beams
- Large Rear Driveway Parking area with Carport
- Early Viewing Advised
- Three Bedroom Terraced Character Property
- Kitchen, Sitting Room and Lounge plus Conservatory
- Excellent Rear Garden
- Close to all Local Amenities
- Hit the 'Request Details' or 'Email Agent' button to secure your viewing now!



Total floor area: 126.6 sq.m. (1,363 sq.ft.)

This floor plan is for illustrative purposes only. It is not drawn to scale. Any measurements, floor areas (including any total floor area), openings and orientations are approximate. No details are guaranteed, they cannot be relied upon for any purpose and do not form any part of any agreement. No liability is taken for any error, omission or misstatement. A party must rely upon its own inspection(s). Powered by www.Propertybox.io

Quote Reference PC0649. Hit the 'Request Details' or 'Email Agent' button to secure your viewing now! An amazing terraced cottage of very good size in the village of Cleobury Mortimer with a wealth of incredible original features including extensive oak beams. Consisting of two large connected reception rooms, kitchen areas, conservatory, downstairs W.C. and a utility room. The first floor consists of two double bedrooms with a dressing room/bedroom three approaching bedroom one and a family bathroom. The rear garden and has planting beds and pathways leading to a large driveway offering parking for several vehicles at the rear with a covered car

port, outbuilding and sheds. Electric heating. With some modernisation this property will become a lovely cottage home for someone. Located in this sought after village location with excellent local amenities and transport links nearby. Hit the 'Request Details' or 'Email Agent' button to secure your viewing now!