

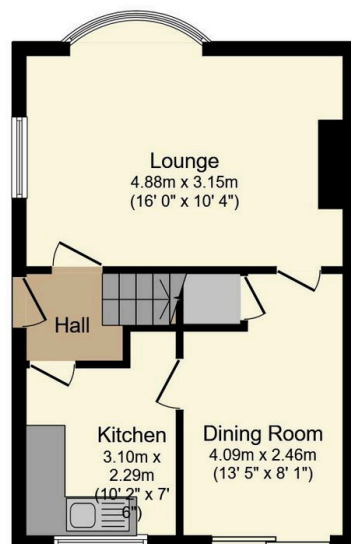
Kensington Gardens, Wordsley, Stourbridge, DY8 5HS

Guide Price £210,000

🛏️ 3 🚿 1 🚗 2

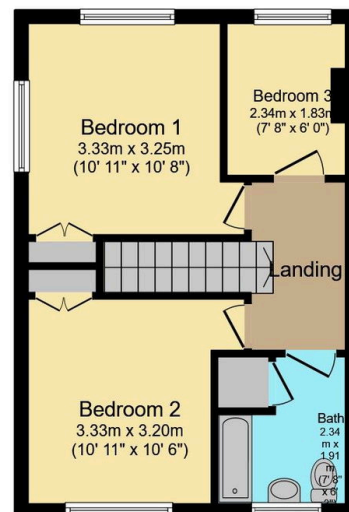


- Quote Reference JS0667
- Pleasant "Wooded" Aspect to the Rear
- Upgrading Required but Tremendous Potential
- Upvc Double Glazing
- Lounge and Separate Dining Room
- 3 Bed Semi in Popular Cul-De-Sac
- Close to Ashwood Park Primary School
- Gas Central Heating
- Ideal for First Timers or Young Families
- No Upward Chain



Ground Floor

Floor area 36.9 m² (397 sq.ft.)



First Floor

Floor area 36.0 m² (388 sq.ft.)

TOTAL: 72.9 m² (785 sq.ft.)

This floor plan is for illustrative purposes only. It is not drawn to scale. Any measurements, floor areas (including any total floor area), openings and orientations are approximate. No details are guaranteed, they cannot be relied upon for any purpose and do not form any part of any agreement. No liability is taken for any error, omission or misstatement. A party must rely upon its own inspection(s). Powered by www.Propertybox.io

Pleasantly situated with a wooded aspect to the rear in this popular cul-de-sac this 3 Bedroom Semi-Detached affords spacious gas centrally heated and Upvc double glazed accommodation which although requires improvement and upgrading represents an excellent opportunity for the young family or first time buyer. Hit the "Request a Viewing" or "Contact Agent" buttons today!