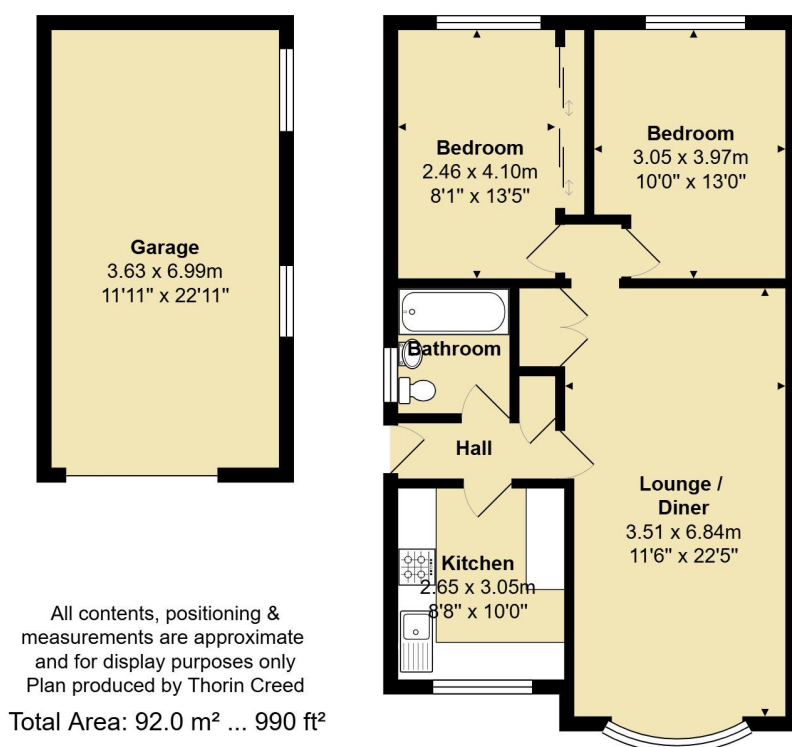


Humber Drive, Biddulph, Staffordshire Moorlands.

2 1 1



- Two Bedroom Detached Bungalow
- Desirable Corner Plot
- Perfect Lifestyle & Serenity
- Spacious Detached Brick Garage
- Comfortable Living Space
- Potential to Extend (Subject to obtaining Planning)
- Prime Residential Location with Beautiful Garden
- No Upward Chain
- Live the Biddulph Lifestyle
- Viewing Highly Recommended, When booking a viewing, remember to quote AK0396.



This beautifully presented two-bedroom detached bungalow sits on a desirable corner plot, offering wrap-around gardens, a detached garage, and ample driveway parking. Inside, the property features a bright lounge with a bay window, a well-appointed kitchen, a modern bathroom, and two double bedrooms overlooking the private rear garden. **When booking a viewing, remember to quote AK0396.**