

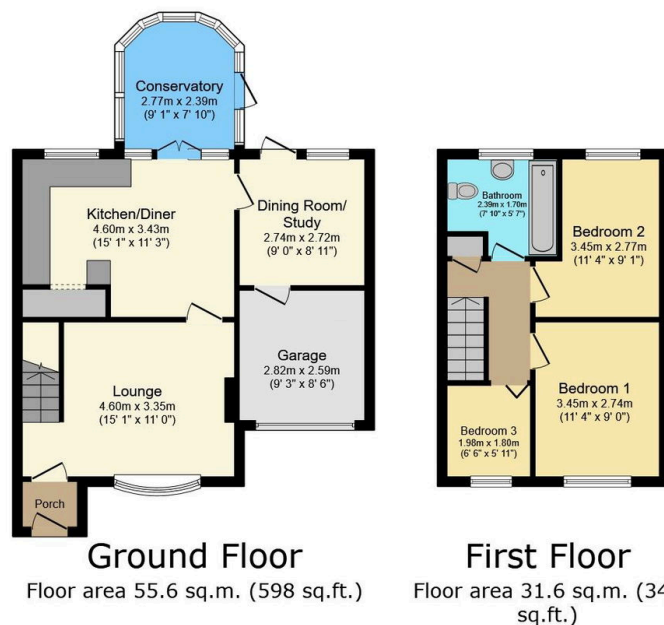
## Marine Crescent, Wordsley, Stourbridge, DY8 4XP

Guide Price £240,000

3 1 2



- Quote Reference JS0667
- Ideal For Young Families
- Keenly Priced with NO UPWARD CHAIN
- Close to Local Amenities and Canal Walks
- Gas Central Heating and Upvc Double Glazing
- Spacious 3 Bed Semi
- Excellent Further Potential
- Popular and Convenient Address
- Elegant Conservatory
- Pleasant Rear Garden



TOTAL: 87.2 sq.m. (939 sq.ft.)

This floor plan is for illustrative purposes only. It is not drawn to scale. Any measurements, floor areas (including any total floor area), openings and orientations are approximate. No details are guaranteed, they cannot be relied upon for any purpose and do not form any part of any agreement. No liability is taken for any error, omission or misstatement. A party must rely upon its own inspection(s). Powered by www.Propertybox.io

Keenly priced, this 3 Bedroom Semi-Detached affords spacious gas centrally heated and Upvc double glazed accommodation which although requires certain improvements is ideal for the young family or first time buyer and is pleasantly situated in this popular and convenient address close to good local schools, transport links to Stourbridge, Kingswinford and the Merry Hill Centre and to pleasant walks or rides along the local Canal network. Available with NO UPWARD CHAIN. Hit the "Request a Viewing" or "Contact Agent" buttons today!