

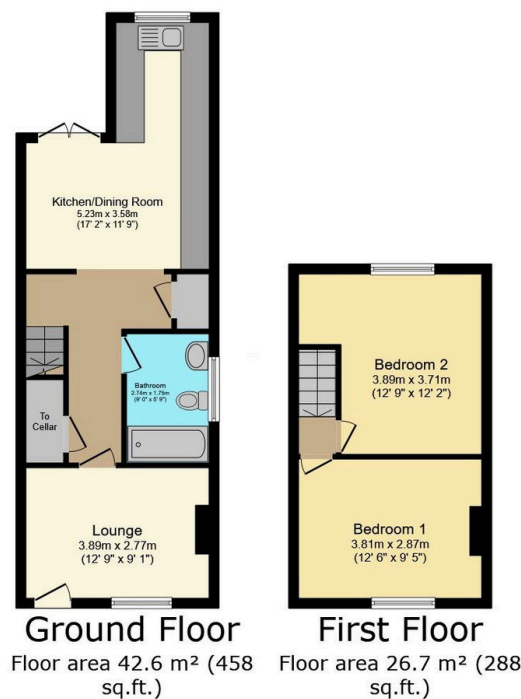
Cobden Street, Wollaston, Stourbridge, DY8 3RU

Guide Price £260,000

🛏️ 2 🚿 1 🚻 1



- Quote Reference JS0667
- "Turn Key" 2 Bed Victorian End of Terrace
- Popular Wollaston Address
- Superb Open Plan Kitchen with Diner and Appliances
- Pleasant Good Sized Rear Garden
- Gas Central Heating and Upvc Double Glazing
- Stylish Modern Bathroom with Shower
- Useful Cellar
- Ideal First Buy
- Available with NO UPWARD CHAIN



TOTAL: 69.3 m² (746 sq.ft.)

This floor plan is for illustrative purposes only. It is not drawn to scale. Any measurements, floor areas (including any total floor area), openings and orientations are approximate. No details are guaranteed, they cannot be relied upon for any purpose and do not form any part of any agreement. No liability is taken for any error, omission or misstatement. A party must rely upon its own inspection(s). Powered by www.Propertybox.io

SUPERB "TURN KEY" 2 BED END TERRACE JUST A SHORT WALK FROM THE CENTRE OF WOLLASTON affording deceptively spacious gas centrally heated and Upvc double glazed accommodation with charm and appeal and represents a wonderful opportunity for the first time buyer or young family. Book your viewing today !